

30 Brookpine Pl, West Pennant Hills, NSW 2125

Sold - 17/05/2021

House 5 3 2



Stunning Sanctuary in Murray Farm Public School Catchment

*** MASKS MUST BE WORN TO ALL OPEN HOMES AND PRIVATE INSPECTIONS - PLEASE PRACTICE SOCIAL DISTANCING ***

Open for Inspection

By Appointment.

AUCTION DETAILS: On Site | Saturday 29.05.21 at 12.30pm (Unless SOLD Prior)

With its breath-taking natural surrounds, this magnificent residence is an idyllic retreat for families, located just five minutes to the Cherrybrook Metro Station. Set on a 1,635sqm block, it has been cleverly designed to take full advantage of its spectacular and secluded bushland setting. Floor-to ceiling windows frame the captivating treetop backdrop at every angle, including from the king-sized master retreat. The home exudes resort style living with an open plan rumpus and meals area flowing out to an expansive, sun-drenched hardwood deck. Surrounded by luscious tropical landscaping, the property cascades down to a private reserve with creek offering a tranquil space to reflect, relax and explore.

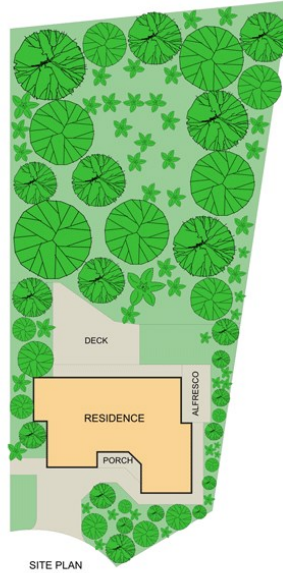
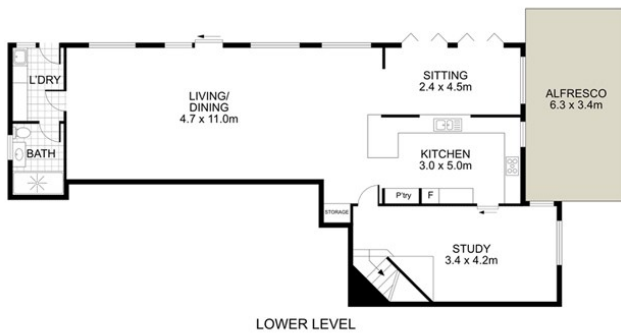
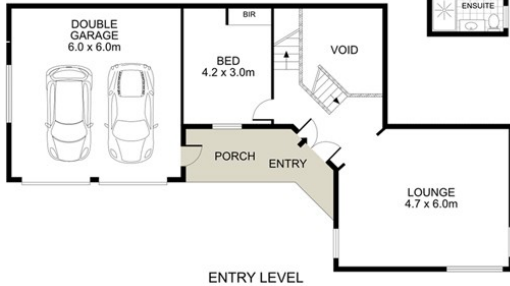
- + Quiet cul-de-sac address setting, exceptionally peaceful lifestyle
- + Three light-filled levels, soaring cathedral ceilings
- + Contemporary interior, timber flooring, exposed feature brickwork
- + Versatile floorplan with elegant formal lounge/dining, home office
- + Fabulous casual living/meals area, stone kitchen with gas cooking
- + Stainless steel Miele appliances including steam oven, large pantry
- + Servery window to enclosed sunroom, easy access to alfresco terrace
- + Renovated bathroom, free standing tub, stone-stack feature wall
- + Master retreat with built-in wardrobe, updated ensuite, air-conditioning
- + Four other double bedrooms with wardrobes/storage, ceilings fans
- + Updated laundry with additional bathroom, excellent built-in storage
- + Central ducted heating, ceiling fans throughout, easy care gardens
- + Double automatic garage with internal access plus workshop space
- + Zoned for Murray Farm Primary School and Pennant Hills High School
- + Close to Oakhill College, Hills Grammar, Tara and The Kings School
- + Central to Coonara Shopping Village (1.3km), Thompson's Corner (3.2km) Castle Towers (3.7kms), Cherrybrook Village (6.3km), North Rocks Shopping Centre (6.2km) and Cadinsford Court (6.4km)

Listed By

The Office
Phone: (02) 9980 1222



Floorplan



Internal area: 323 m²
 External area: 153 m²
 Garage area: 36 m²
 Total area: 512 m²
 Landsize area: 1635 m²

Anil Mehta
 Sales Consultant, B. Eng, LREA
 0421 062 185
 anil@c21wph.com



This floor plan is intended as a guide only. Layout dimensions are approximate only. No representations or warranties of any nature whatsoever are given or intended. Any person using this information should rely on their own enquiries
 The information contained on this brochure has been furnished to us by the Vendor/Landlord whose property appears. We have not verified whether or not that information is accurate and do not have any belief one way or another in its accuracy. We do not accept any responsibility to any person for its accuracy and do no more than pass it on. All interested parties should make and rely upon their own enquiries in order to determine whether or not this information is in fact accurate. For information on our Privacy Policy please refer to www.century21.com.au/privacy/