




40/277-283 Canterbury Rd, Canterbury, NSW 2193

\$695,000 - \$725,000

Apartment 2  2  1 



## TWO BEDROOM SPLIT LEVEL APARTMENT

Near new rear facing split level apartment with stunning views of Tasker Park. Located within a short walking distance to Woolworths, Aldi, Cafes, Station, Cooks River Cycle Way, Aquatic and fitness Centre while only 9.5kms from Sydney's CBD approx.

- Two Bedroom split level apartment
- Designer apartment featuring stylish open-plan interior
- Well appointed sleek kitchen with quality appliances
- Bedrooms complete with built-in robes
- Generous bathroom and ensuite
- Internal laundry facilities
- Air conditioning
- Security building with intercom access
- Secure undercover parking and storeroom
- Access to unique residents only landscaped podium garden
- Rear facing apartment with access from Clunes Lane.

Details: George Vourlas 0412 074 222.

**Open for Inspection**

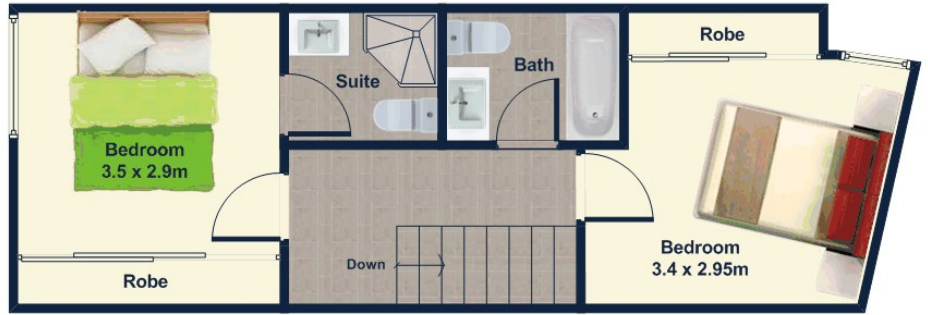
By Appointment.

### Listed By

George Vourlas  
Phone: (02) 9789 2888  
Mobile: 0412 074 222



Floorplan



Upper Level

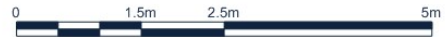


525.00



40/277-283 Canterbury Rd, Canterbury

This plan is for illustrative purposes only. Dimensions are approximate. It does not constitute part of any legal document or commercial contract for the sale of this property.



FLOOR & FOTO  
0420 310 710