




25/2A Alpita St, Kuraby, QLD 4112

Townhouse 3  2  2 

Gone at Auction \$615,000 by Faraz Peyman



## Owner Occupied Since Built

This modern three-bedroom townhouse combines the comfort of a resort-style complex with the convenience of family-friendly suburban living. Featuring spacious open plan living and dining areas, complemented by air conditioning, and freshly painted with a near-new oven and brand-new remote garage, this owner-occupied townhouse is immaculately presented and designed for effortless, low-maintenance living. Ideally located within walking distance to local amenities and with quick access to the M2, this home offers leisure and ease in equal measure.

### Open for Inspection

By Appointment.

### Summary:

- Modern three-bedroom townhouse, air-conditioned master suite with walk-in robe and ensuite, plus additional bedrooms with built-in robes.
- Spacious open plan living and dining areas with air conditioning and powder room.
- Freshly painted, lots of storage, near-new oven, and brand-new remote garage.
- Owner-occupied, immaculately presented, and low maintenance.
- Convenient location close to shops, public transport, and quick access to M2, ideal for swift commuting to the city.

Nestled in an idyllic pocket of Kuraby, this townhouse is a quick stroll from essential public transport options, primary school, parklands, and childcare, making it an ideal setting for family living. A short drive connects you to Runcorn State High School, Underwood Marketplace, as well as the vibrant precincts of Sunnybank and Calamvale. With easy access to the M2, city commutes are a breeze.

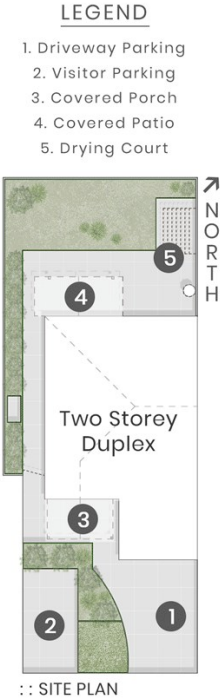
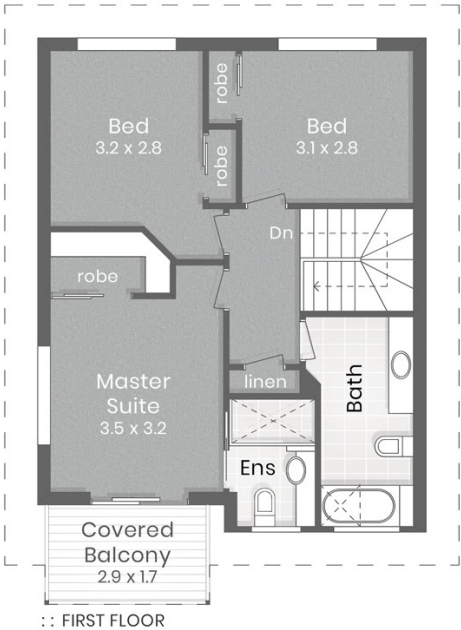
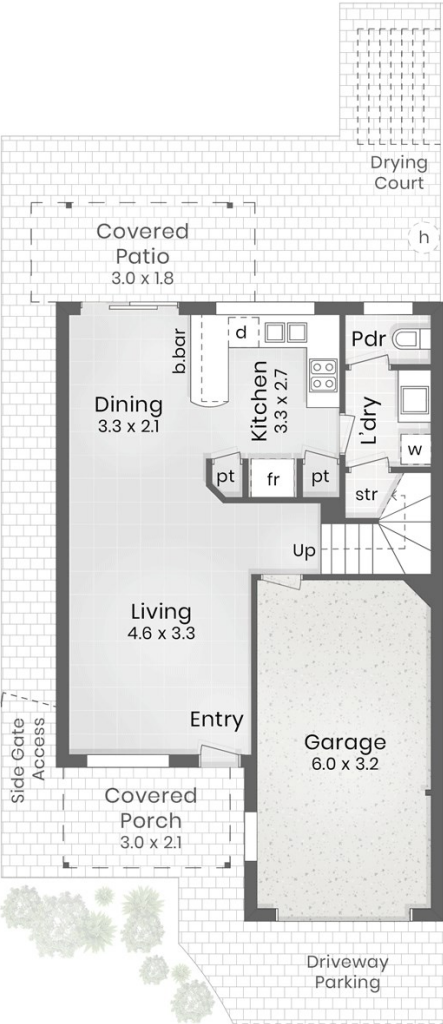
- 550 m to Kuraby Train Station
- 600 m to Kuraby Mosque & bus stop
- 1.2 km to Kuraby State School
- 1.3 km to Wally Tate Park
- 1.3 km to Kuraby Grove Child Care Centre
- 2.4 km to Runcorn State High School
- 2.5 km to Underwood Marketplace
- 4.3 km to Sunnybank Catholic Church 'Our Lady of Lourdes'

### Listed By

Peter Crowther  
Phone: (07) 3344 0288  
Mobile: 0411 866 008



Floorplan



DRIVEWAY ACCESS TO  
ALPITA STREET

TIMBERTOP GROVE 25/2A Alpita Street KURABY

LJ Hooker  
Property Partners

**DISCLAIMER:** This is not a legal document therefore all measurements and information provided is subject to survey. No permission is given to use or alter this Floor Plan without the consent of Pure Design Concepts. The overall presentation style, layout, imagery, fonts, background, colours and terminology has been originally created by PDC and is subject to strict copyright. No ownership is taken of building design. Find out more at [puredesignconcepts.com.au](http://puredesignconcepts.com.au)

pdc.