

219-220 Se/22-36 Mitre St, Port Douglas, QLD 4877

\$835,000 - \$855,000

Unit 3  2  1 



3 BEDROOM PENTHOUSE - SPOIL YOURSELF!

LIVE IN OR RENT OUT!

Spoil yourself a little with this generously proportioned penthouse apartment located at Port Douglas' Sea Temple Resort and Spa.

Open for Inspection

By Appointment.

Enjoying a quiet location with views through tropical vegetation to the local golf course, this apartment is offered fully furnished for maximum lifestyle or investment convenience.

The three king-sized bedrooms, two bathrooms, fully optioned kitchen, open plan living-dining area and integrated laundry will help ensure your comfort at all times.

Adding further to its appeal is the studio + 2-bedroom configuration (separate entries) that provides the potential for dual income streams and flexible owner usage.

While Port Douglas and the resort restaurant will have your dining out options well and truly covered, you can also choose to stay in thanks to the apartment's well-appointed kitchen that has everything you need including an oven, four burner cooktop, microwave, dishwasher, fridge, dual sinks and excellent benchtop and storage space.

Relax in the spacious air-conditioned living area or enjoy the balminess of the tropics from your dual covered balconies.

Better yet, ascend the feature spiral staircase to your massive roof-top terrace where you can entertain, barbeque, suntan, relax in the shade, or unwind in the spa.

And for those times when you don't feel like leaving the resort, you won't need to as you'll also have access to the comprehensive list of in-house amenities that include the massive freeform pool, restaurant, bars (including pool bar), day spa and fitness centre.

Add the direct access to famous Four Mile Beach and the proximity to one of Port's best golf courses and this offering becomes even more enticing.

Listed By

Matthew Scott

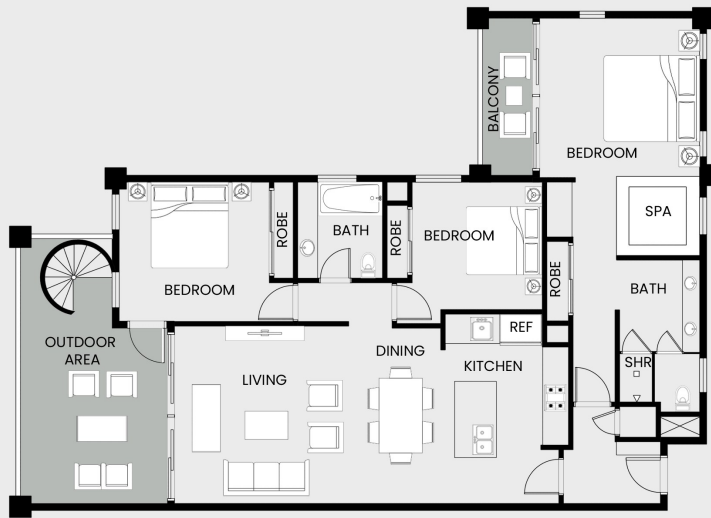
Phone: (07) 4099 5414

Mobile: 0457 738 804

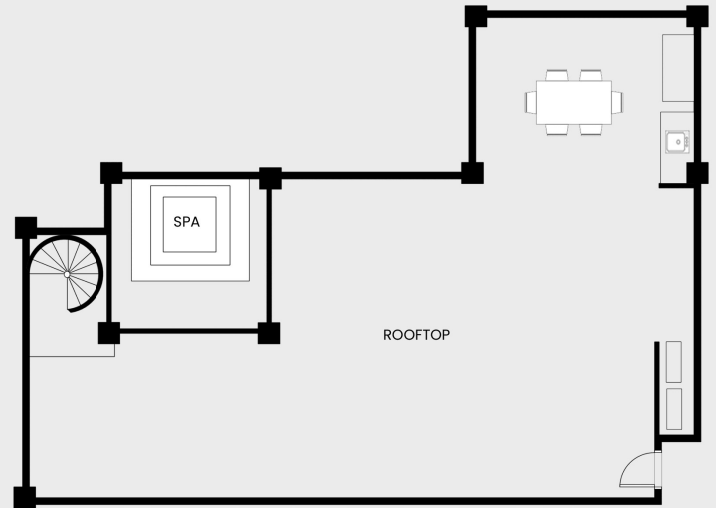


Floorplan

219 & 220 Sea Temple



FIRST FLOOR PLAN



ROOFTOP TERRACE



Please note: this floorplan including furniture, measurements and dimensions is for illustrative purposes only and is not to exact scale or specification. LJ Hooker gives no guarantee, warranty, or representation as to the accuracy and layout. Please direct all enquiries to the selling agent.