

14 Bray Rd, Mooloolah Valley, QLD 4553

Sold - 23/04/2024

House 4  1  2 



## Beautiful Family Home in Heart of Town

Welcome to the beautiful 14 Bray Road, a lovely 4 bedroom home in the heart of Mooloolah Valley. Nestled within the quaint charm of the beautiful township, this timeless village home, exudes a sense of tranquility and modern comfort. Set upon a generous 1062m2 block of gently sloping land, the property offers ample space for expansion and relaxation.

**Open for Inspection**

By Appointment.

Step inside, and you'll find a meticulously maintained interior that has undergone a complete renovation. Fresh paint and new guttering adorn the exterior, while inside, the home boasts four spacious bedrooms, a modern bathroom, and an inviting open plan lounge and dining room. The newly renovated kitchen is a highlight, featuring abundant storage and modern amenities, catering to the needs of any home cook.

Features include:

- 4 Spacious bedrooms with fans and built ins
- Beautifully renovated bathroom with separate toilet
- Internal laundry
- Spacious modern kitchen with electric cook top
- Airconditioning
- Shed with side access
- 1062m2 block
- Large solar array
- Close to town and shops

The property's ideal location epitomizes easy living, with shops, schools, and parks just a leisurely stroll away. For those conscious of their environmental footprint, everyday needs and public transport, including the train station, are conveniently within walking distance.

Despite its central position within the village, the property exudes a sense of privacy, complemented by town water and services, along with the potential for further expansion. Whether you're seeking a lock-and-leave lifestyle for your travels or a spacious retreat for a growing family, this home perfectly encapsulates the hinterland lifestyle without the hefty price tag of acreage.

Don't miss your chance to experience the charm of this renovated cottage first hand. Call Jack today on 0484 241 803 to book a viewing.

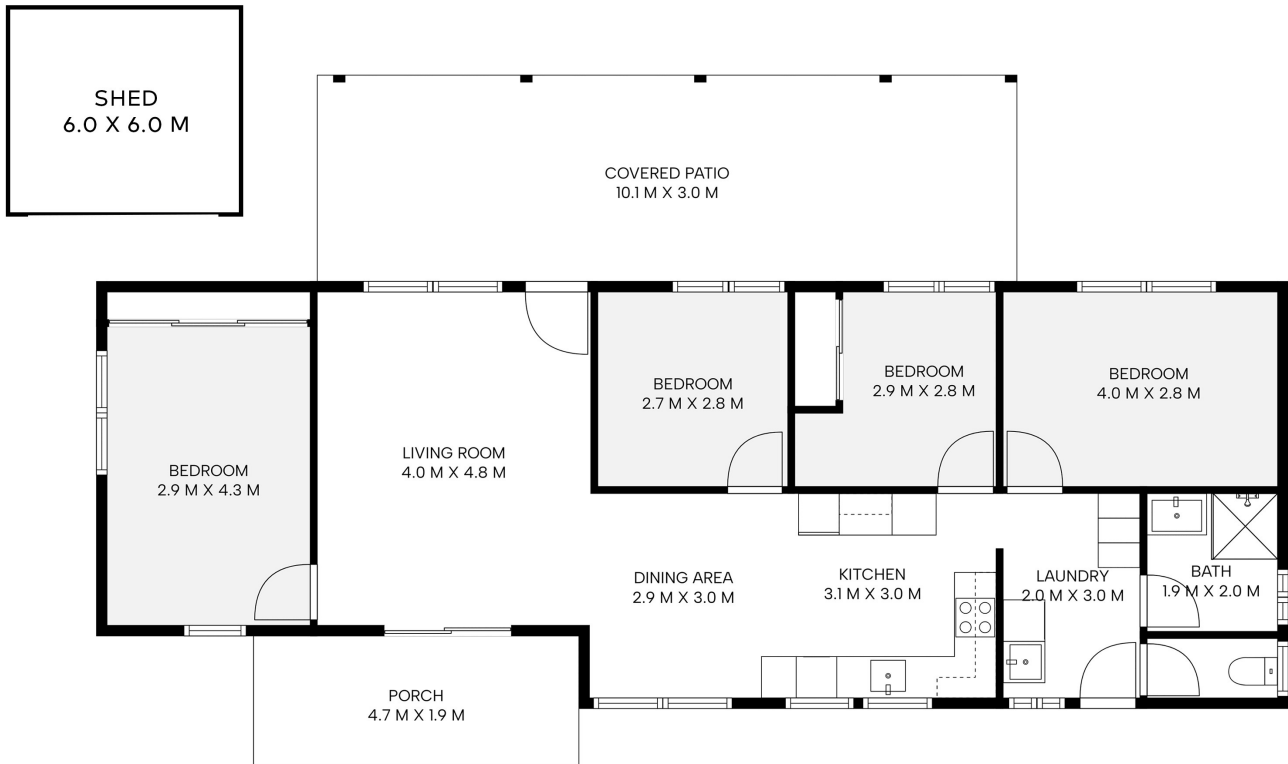
### Listed By

Paul Anthony

Mobile: 0427 859 399



Floorplan



14 Bray Rd, Mooloolah Valley

Artist Impression ONLY. Every attempt has been made to ensure the accuracy of this floor plan. All measurements are approximate and we take no responsibility for any error or mis-statement. This plan should only be used for real estate purposes for a prospective buyer. FLOOR PLAN BY EMG REAL ESTATE MEDIA | [elitemediasurshinecoast.com.au](http://elitemediasurshinecoast.com.au)

