

483 Beechboro Road North Nth, Beechboro, WA 6063

Under Contract

House 9  1  1 



9 bedroom home | 300 sqm interior | over 1800 sqm land

EOI \$1.6M - \$1.8M

// Summary

36 metres wide 49 metres deep this rectangular Property has a residential zoning with mixed use approval and the potential to be subdivided into several separate residential lots subject to WAPC approval

This rare opportunity to acquire ideally located land next to popular amenity in the Perth Northern Central Corridor provides the option to lease the current Improvement or demolish and sell subdivision lots to builders

// Building NDIS Friendly

- \* 2 TV
- \* Retic
- \* Alarm
- \* Secure
- \* 22 Car bays
- \* 14 Split system AC
- \* Electric roller gate entry
- \* Approximately 1807 sqm land
- \* Zoning is Residential ZR20 / ZR50
- \* Potential uses Business or Residential
- \* Approximately 300 sqm of interior building area
- \* Spacious with two separate wheel chair access ramps
- \* 12 Vanity cabinets 9 Bedrooms 2 Toilets ( 1 disabled ) 1 Bathroom ( disabled bath and wheel chair shower ) Large car garage plus extra parking available

Potential rent \$1000 per week | Functional location | Easy care | Nearby parks shops amenity

### Listed By

John Samykannu  
Phone: (08) 9344 5577  
Mobile: 0411 263 175

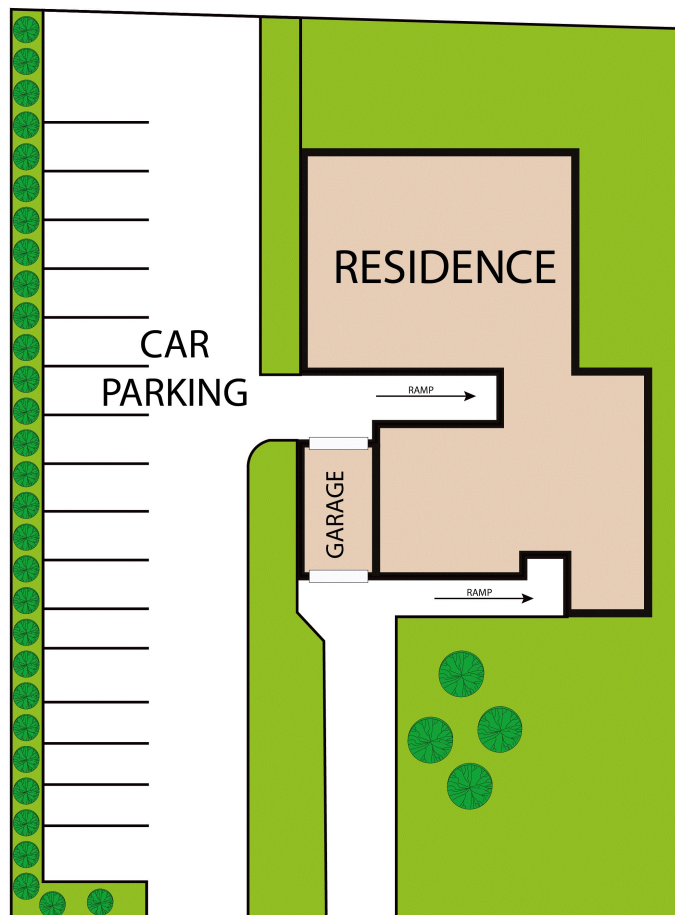
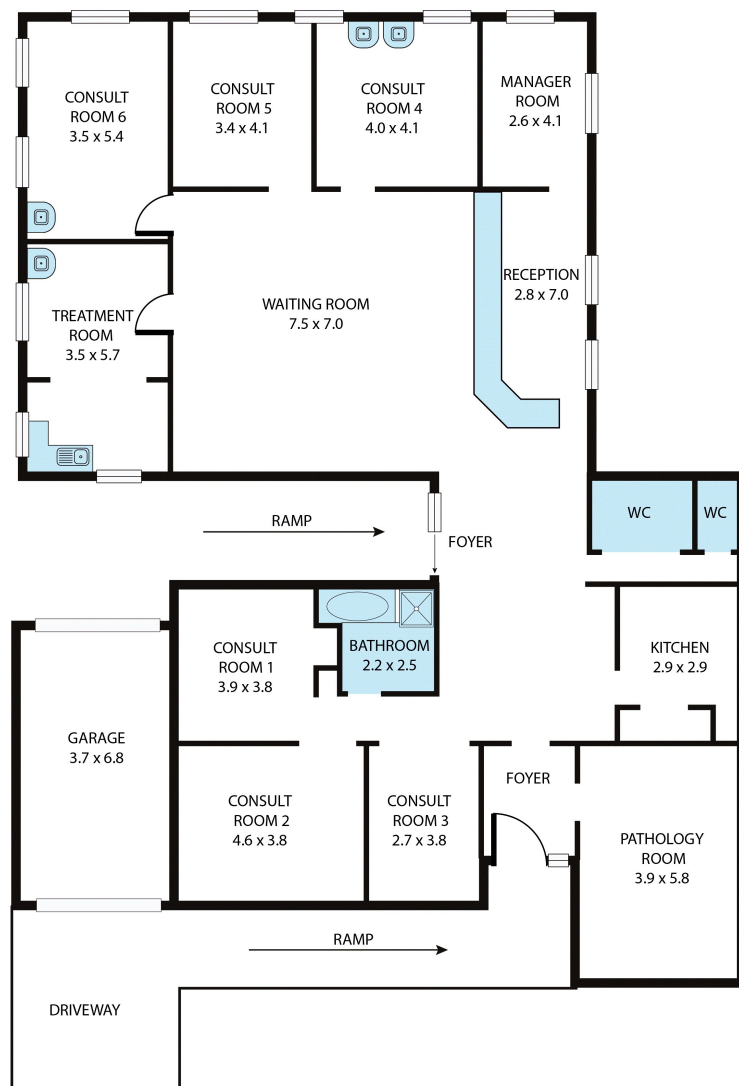
John Samykannu  
Phone: (08) 9344 5577  
Mobile: 0411 263 175



Open for Inspection

By Appointment.

## Floorplan



### 483 Beechboro Road N, Beechboro WA 6063

Whilst every attempt has been made to ensure the accuracy of the floor plan contained here, measurements of doors, windows, rooms and any other items are approximate and no responsibility is taken for any error, omission, or misstatement. This plan is for illustrative purposes only and should be used as such by any prospective purchaser.

BUILT AREA : 326m<sup>2</sup>