

26/40 Tryon St, Upper Mount Gravatt, QLD 4122

Sold - 30/03/2024

Apartment 2  2  1 



Auction this Saturday! Must be Sold!!

Auction will be held on site at 1:30pm this Saturday.

Owners have purchased elsewhere and this beautiful property must be sold.

Beautiful and Breezy Two-Bed Unit in Unbeatable Location!

In a perfect position surrounded by an abundance of amenities, this splendid two-bedroom unit offers an incredible opportunity for first-home buyers and investors. Get ready to move straight in, as the current owners have committed to their next chapter, so this home must be sold!

- Fabulous two-bed, two-bath unit with large balcony and new flooring in both bedrooms!
- Generous, open plan living and dining with A/C, ample natural light and beautiful breezes
- Great-sized kitchen with large fridge space and electric appliances incl. dishwasher
- Well managed complex with low body corp. fees of approx. \$3,600p.a. plus secure lockup single garage for your unit
- Amazing location, just a short walk to parks, city buses, and Westfield!

This fantastic complex is spread out across five buildings, a spacious layout for only 28 units offering residents added peace and quiet and plenty of visitor parking. Unit 26 comes with its own secure lockup single garage in the parking level, so you can leave your car safely stored away while you walk to the array of nearby amenities - save your fuel for weekend getaways!

- Bus stop directly outside complex (bus 174)
- 140 m to Tryon St Park
- 230 m to Tryon Plaza
- 290 m to Club Southside sporting club
- 500 m to Westfield Mt Gravatt with express city bus interchange
- 900 m to Upper Mount Gravatt State School
- 1.5 km to Pacific Motorway entrance
- 1.9 km to MacGregor State High School
- 3.2 km to Griffith University Mount Gravatt Campus

Listed By

Kevin Ahn
Phone: (07) 3344 0288
Mobile: 0488 088 599

Peter Crowther
Phone: (07) 3344 0288
Mobile: 0411 866 008



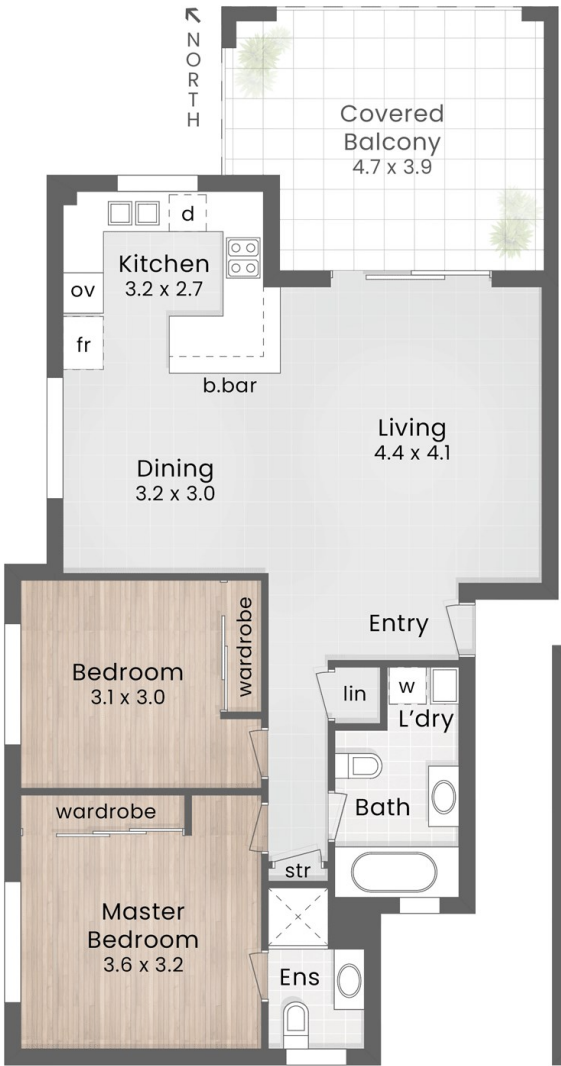
Floorplan

POINTS OF INTEREST

- 1. CASA TOSCANA
- 2. Griffith University Mount Gravatt Campus
- 3. Griffith University Nathan Campus
- 4. Nissan Arena | 5. QEII Jubilee Hospital
- 6. Sunnybank Plaza | 7. Westfield Garden City
- 8. Mt Gravatt Plaza
- 9. TAFE Queensland Mount Gravatt
- 10. Westfield Carindale



:: LOCATION MAP



:: LEVEL 1



:: GROUND LEVEL
2.6m Ceiling

CASA TOSCANA

26/40 Tryon Street UPPER MOUNT GRAVATT

2 Bed 2 Bath 1 Car

Internal 86m² | Balcony 18m² | Total 104m²
Garage 20m²

LJ Hooker
Property Partners

DISCLAIMER: This is not a legal document therefore all measurements and information provided is subject to survey. No permission is given to use or alter this Floor Plan without the consent of Pure Design Concepts. The overall presentation style, layout, imagery, fonts, background, colours and terminology has been originally created by PDC and is subject to strict copyright. No ownership is taken of building design. Find out more at puredesignconcepts.com.au

pdc.