

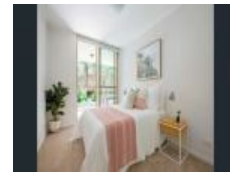


326/168 Queenscliff Rd, Queenscliff, NSW 2096

Leased - \$900

Unit 2  2 



Huge Modern Two Bedroom Apartment In Highly Sought After Com

Exquisite open floor plan with bedrooms flowing out onto the generous north-facing terrace overlooking immaculate landscaped gardens. This luxurious resort-like haven is ideal for professionals, young families and downsizers alike.

- Expansive open plan living/dining extending onto terrace
- Contemporary gas kitchen with Miele appliances, including dishwasher plus Corian benchtops/breakfast bar
- Carpeted throughout
- Master suite with walk-in robe, contemporary ensuite and direct access onto terrace
- Generous second bedroom with built-in robe and direct access to terrace
- Modern main bathroom with separate bath and shower
- European-style laundry
- Large, versatile study area
- Security complex with one allocated car space, visitor parking and intercom
- On site gym amenities

Open for Inspection

By Appointment.

In close proximity to both Queenscliff and Manly Beaches, Keirle park, Manly Golf Course, Warringah mall and more! Get in quick, this property won't last long!

Got a question? Contact Sienna on 0423 554 366

Listed By

James Smyth
Phone: (02) 9905 4100

