

11/16 Troughton Rd, Sunnybank, QLD 4109

Now \$565,000 | Price Drop - Act
Quickly!

Apartment 2  2 



Stylish apartment perfectly nestled in the lively heart of S

Set the benchmark in your social scene for easy-care apartment living in sensational Sunnybank. Part of a mid-rise, ultra-modern complex that's a stone's throw from vibrant shopping, restaurant and retail hubs, public transport, schools, uni, and top medical centres, this two-bed beauty with a single carport has all you need to be comfortable and connected.

Open for Inspection

By Appointment.

Top features:

- Two generous bedrooms: built-in robes, swanky matt black ceiling fans, balcony access
- Two luxe bathrooms (1 ensuite): matt black tapware, full-height tiling, black framed showers
- Space-savvy, designer kitchen: induction cooktop, stone bench tops, dishwasher
- Light-filled, open-plan living/dining area with A/C for all-season comfort
- Big covered outdoor entertaining balcony, also accessible through a living room slider

The fashionable fit-out of this gorgeous apartment is what you'd expect from a contemporary building that looks this good from the outside.

Honey-toned hybrid timber flooring through the apartment's main entry into a central, open-plan kitchen/living/dining space makes a fabulous first impression. This warm tone contrasts against crisp white walls and kitchen cabinetry, accented by the jet-black of door hardware and the frames around the glass slider onto the balcony.

The kitchen makes excellent use of its footprint; a well-configured prep and cooking zone offers a contemporary induction cooker, rangehood, under-bench oven, corner pantry, with storage above and below a striking black and white patterned tiled splashback and elegant rose gold tapware.

In the two fan-cooled bedrooms, privately positioned at either end of the balcony to which they open, plush carpet cushions hard-working toes. Both rooms have built-in robes; one a little more luxe with a private ensuite, although the other has an equally lovely main bathroom all to itself.

The bathrooms mirror each other in their fit-out with matt black hardware, black and white patterned tiles underfoot and a floor-to-ceiling vertical lay-out of white subway tiles on the walls; both vanities have black finishes with white benchtops and deep, above-counter wash basins.

Listed By

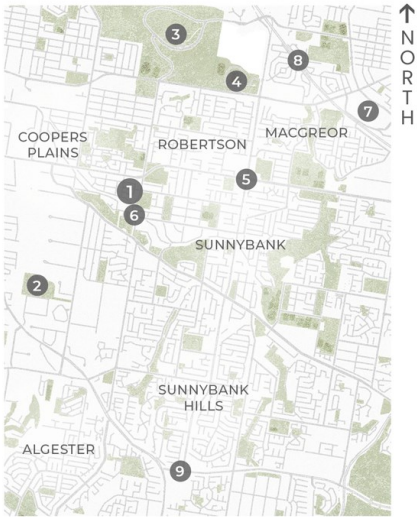
Gary Liu
Phone: (07) 3344 0288



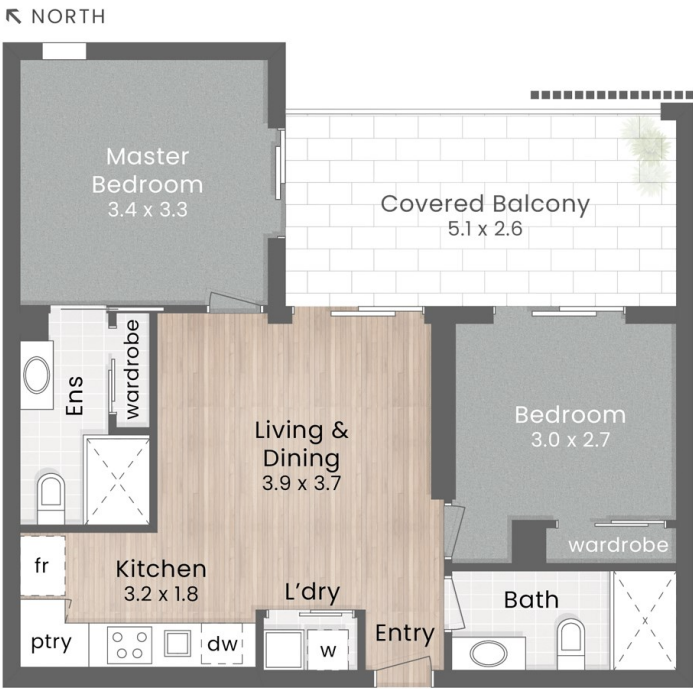
Floorplan

POINTS OF INTEREST

- 1. VILLA RINELLA
- 2. TAFE Acaia Ridge
- 3. Griffith University Nathan Campus
- 4. Nissan Arena
- 5. Sunnybank Plaza & Market Square
- 6. Banoon Train Station
- 7. Westfield Garden City
- 8. Pacific Motorway
- 9. Calamvale Central & Sunnybank Hills Shopping Centres



:: LOCATION MAP



:: LEVEL 3
2.6m Ceiling



Carspace

VILLA RINELLA 11/16 Troughton Road SUNNYBANK

2 Bed 2 Bath 1 Car

Internal 59m² | Balcony 15m² | Total 74m²

LJ Hooker
Property Partners

DISCLAIMER: This is not a legal document therefore all measurements and information provided is subject to survey. No permission is given to use or alter this Floor Plan without the consent of Pure Design Concepts. The overall presentation style, layout, imagery, fonts, background, colours and terminology has been originally created by PDC and is subject to strict copyright. No ownership is taken of building design. Find out more at puredesignconcepts.com.au

pdc.