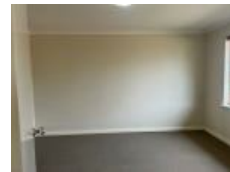


3/6 Rule Ct, Somerville, WA 6430

Leased - \$700

House 3  2 



MODERN & COMFORTABLE

Attractive and modern 3 bedroom x 2 bathroom partly furnished unit in secure complex of 8. Features include under cover parking, connected to natural gas, easy care garden and garden shed, lounge, fridge, dining table and queen size bed. Close to schools, O'Connor IGA and The Oasis. Sorry pets no considered. Available NOW! NF

Open for Inspection

By Appointment.

Listed By

Gavin Gilmore
Phone: (08) 9021 0300
Mobile: 0418 934 696

