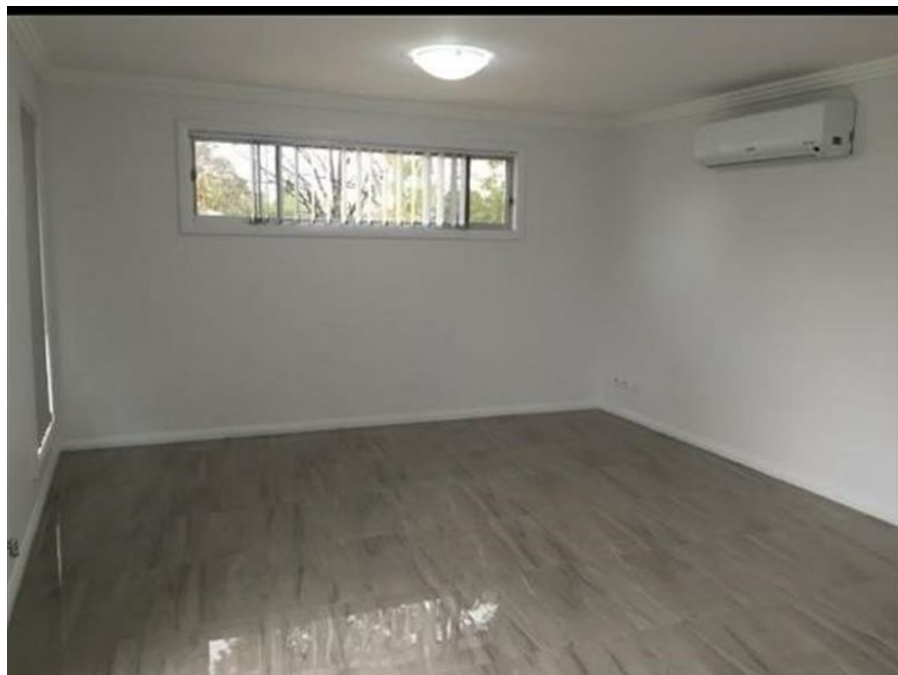


25A Leach Rd, Guildford West, NSW 2161

Leased - \$550

Unit **2**   



Move in NOW !

This granny flat provides a great comfort to whoever is lucky enough to tenant it.

This home features:

- 2 Good sized bedrooms
- A kitchen with ample storage
- Internal Laundry

Open for Inspection

By Appointment.

For any further information and/or to arrange for an appointment to inspect this property, please contact Sofia from Morning Property Rental Department on 0405 922 914.

We do not accept any responsibility to any person in relation to the accuracy of the above mentioned information. All interested parties should make and rely upon their own inquiries in order to determine whether or not this information is accurate.

Listed By

Sofia Makdissi

Phone: (02) 8677 7163

Mobile: 0405 922 914

