




34/134-138 Redfern St, Redfern, NSW 2016

Sold - 7/02/2024

Apartment 1  1  1 



## North facing One Bedroom Apartment with Views & Parking

This beautifully presented one bedroom apartment is peacefully located on the top floor of this well maintained security strata building.

This comfortable home is set amongst eclectic shops and galleries and some of Sydney's best restaurants, cafés and bars. A short stroll takes you to the sporting facilities and sculpture playground in Redfern Park (400m) or to the tennis courts and award-winning heated outdoor pool in Prince Alfred Park (250m) or. Universities (1.5km) and the CBD?(3km) are also easily accessible. Convenient transport options include bus, train and a local car share scheme.

**Open for Inspection**

By Appointment.

The apartment features the following:-

Well proportioned 1 bedroom accommodation (45m2)

Secure Basement Parking with Storage Shed

Sundrenched north aspect

Combined lounge/dining room

Renovated Galley style kitchen with views to Botany Bay

Caesar stone benchtop, lots of storage & dishwasher

Generous bedroom with customised cabinetry and study alcove

Juliette Balcony with district views

Large Modern Bathroom with Internal Laundry

No impact from DA on Western boundary

Existing tenancy at \$750 per week expiring 29 July 2024.

### Listed By

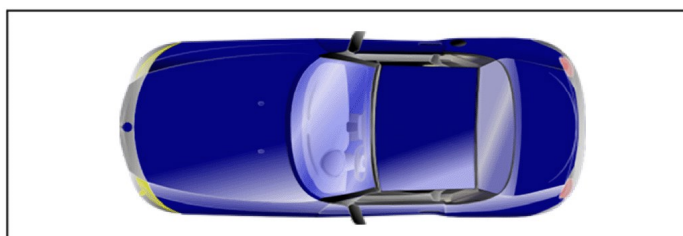
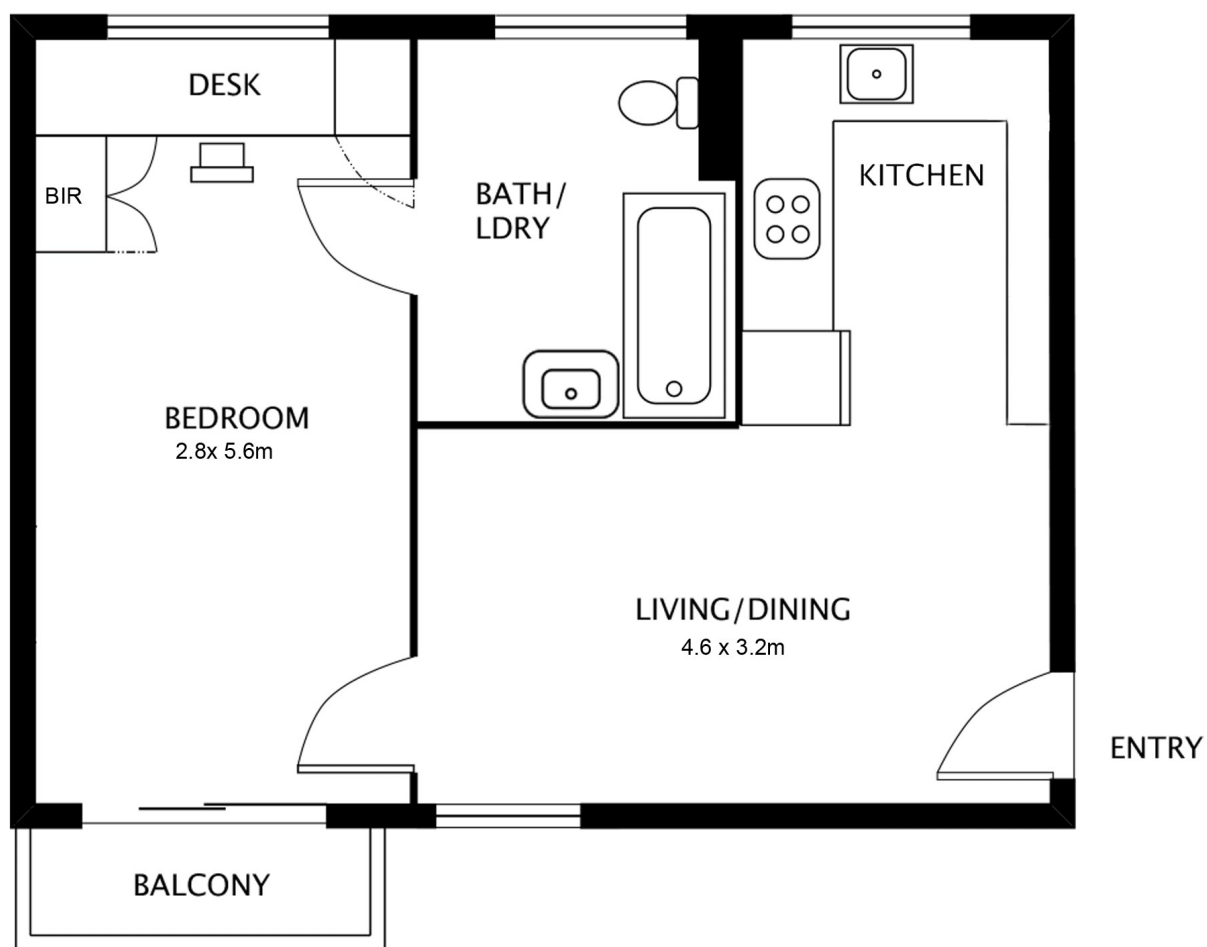
Francesca Lyons

Phone: (02) 80040369

Mobile: 0414 618 505



## Floorplan



## SECURE PARKING