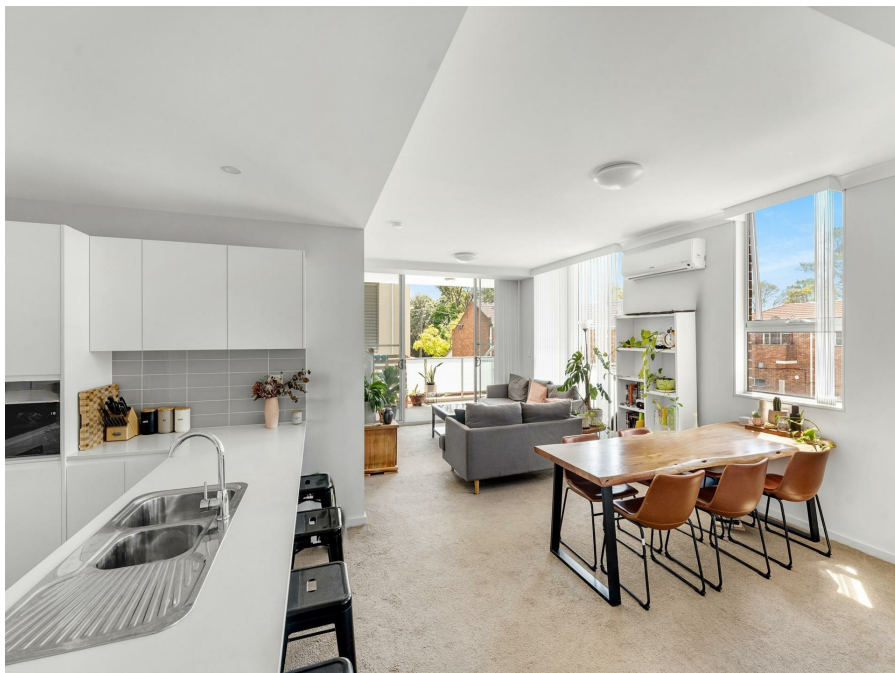


205/4 Bush Pea Lane, Helensburgh, NSW 2508

Contact Agent

Apartment 2  2  1 



Modern North Facing Apartment

Whether searching for a new home or looking to invest or, you'll love the fantastic location and quality finishes of this near new, top floor apartment. With easy access to everything Helensburgh Village has to offer, cafes, local swimming pool and park, schools and shopping at your doorstep with the Royal National Park and walking trails close by.

Open for Inspection

By Appointment.

North facing this beautiful apartment provides open plan living flowing out to a generous alfresco balcony ideal for entertaining and relaxed living.

- Light filled living and dining air conditioned for year round comfort
- Glass sliding doors open to a covered, sun drenched, wrap around balcony
- Stylish kitchen with CaesarStone benchtops and dishwasher
- Both bedrooms include generous built-in robes, master with chic ensuite
- Stunning main bathroom, european laundry
- Secure designated basement parking plus storage cage
- Intercom security and direct lift access
- Footsteps to shops, cafes, restaurants and transport

To truly appreciate this beautiful apartment an inspection is a must.

Call Agent To Arrange An Inspection

** Whilst every effort has been made to ensure the accuracy and thoroughness of the information provided to you in our marketing material, we cannot guarantee the accuracy of the information provided by our vendors, and as such, Ray White Helensburgh makes no statement, representation or warranty, and assumes no legal liability in relation to the accuracy of the information provided. Interested parties should conduct their own due diligence in relation to each property they are considering purchasing. All photographs, maps and images are representative only, for marketing purposes.

Listed By

Chris Kissell

Ron Kissell

Phone: (02) 4294 7000

Mobile: 0410 148 397

