

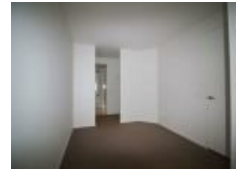



**303E/44 Skyline Dr, Maribyrnong, VIC 3032****Leased - \$500**Apartment 2  2  1 

## Classy and Spacious

Super spacious of some 97 m2 approx and stylish two-bedroom apartment. Located in a central position this property is everything you are looking for.

The apartment comprises of an open plan lounge and dining area with split system heating and cooling, a superb high-quality kitchen with stone benchtop, gas cooktop, electric oven, glass splash back and ample cupboard space. The apartment also features a separate study, NBN ready connection, large bedrooms, master bedroom with WIR & ensuite, separate bathroom with toilet, laundry, intercom entry, private balcony, 1 car space and storage cage.

This is a desirable location with easy access to buses, Footscray station, Aldi only 100m away, pizza and burgers across the road, 1.2km walk to Highpoint shopping centre and only a stroll to the Maribyrnong river walking and cycling paths. Enjoy a round of golf at the nearby Riverside Golf Course or take pleasure in a leisurely walk or bike ride at the nearby walking/cycling tracks, just a short stroll to the Marina and Maribyrnong River and only 7km from Melbourne CBD. It's a Lifestyle Choice!

### Open for Inspection

By Appointment.

**Listed By**  
Abdel Elagaty

