

Unit 3/60 Leycester St, Lismore, NSW 2480

Sold - 6/03/2024

House 2  1  1 



For Sale: Perfectly Designed Townhouse for Downsizers in Lis

Are you looking to downsize your living space without compromising on comfort, convenience, and style? We have the perfect solution for you! This beautifully designed townhouse located in the peaceful suburb of Lismore is the ideal choice for those looking to simplify their lives.

Open for Inspection

By Appointment.

This townhouse is not only compact but also intelligently designed to maximize space and functionality. It features an open floor plan, allowing for seamless movement and flexibility. The living area is spacious enough to accommodate your daily activities, while the sleeping area provides a cozy retreat at the end of the day.

The kitchen is equipped with modern appliances and ample storage space, making meal preparation a breeze. The bathroom, though compact, is well-designed.

One of the key features of this townhouse is its location. Nestled in the quiet suburb of Lismore, you'll enjoy the peace and tranquillity of suburban living, yet you're just a short drive away from the bustling city centre. This balance of convenience and tranquillity makes it an ideal choice for those looking to downsize.

The Townhouse is part of a well-maintained complex, offering a safe and secure environment.

This property is perfect for those who are looking to downsize and simplify their lives. It offers all the comforts of a larger home but in a more manageable and efficient space.

If you've been considering downsizing and are looking for a property that offers comfort, style, and convenience, then this Lismore townhouse could be just what you're looking for.

Don't miss out on this opportunity to embrace a simpler, more streamlined lifestyle. Contact us today to arrange a viewing or for more information.

Located just a short stroll to Lismore Square, Schools, Lismores CBD and the Hospital.

Listed By

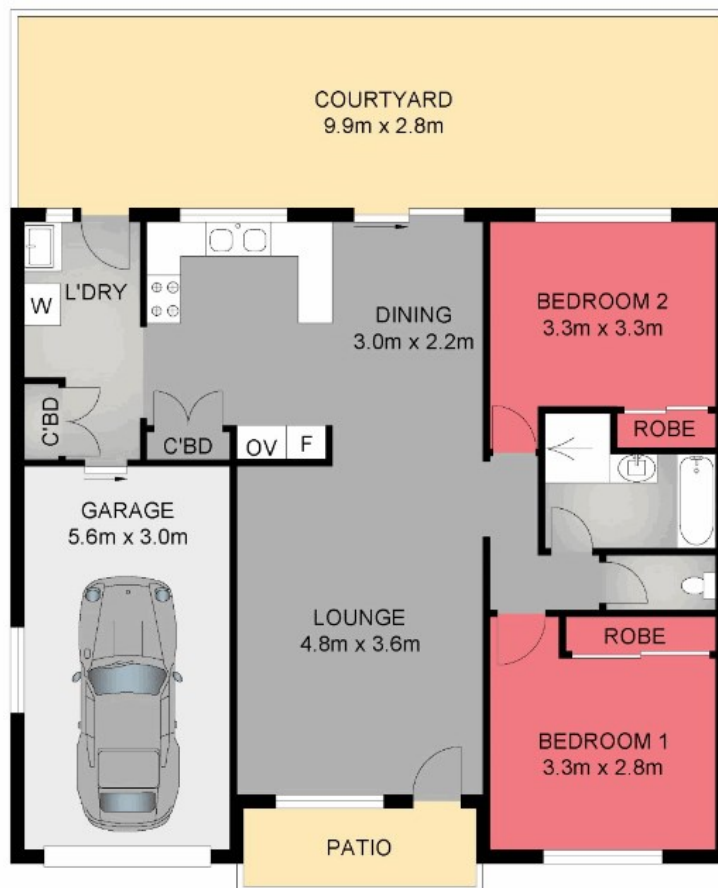
Michelle Mitchell
Phone: (02) 6621 2387
Mobile: 0423 322 873



Robert Menin
Phone: (02) 6621 2387
Mobile: 0414 252 190



Floorplan



Dimensions are approximate. All information contained herein gathered from sources we believe to be reliable.
However we cannot guarantee its accuracy and interested persons should rely on their own enquiries © visionmedia.vision 2023.

INT : 72.0m²
EXT : 32.7m²
GARAGE : 16.8m²



3/60 Leycester Street, Lismore

