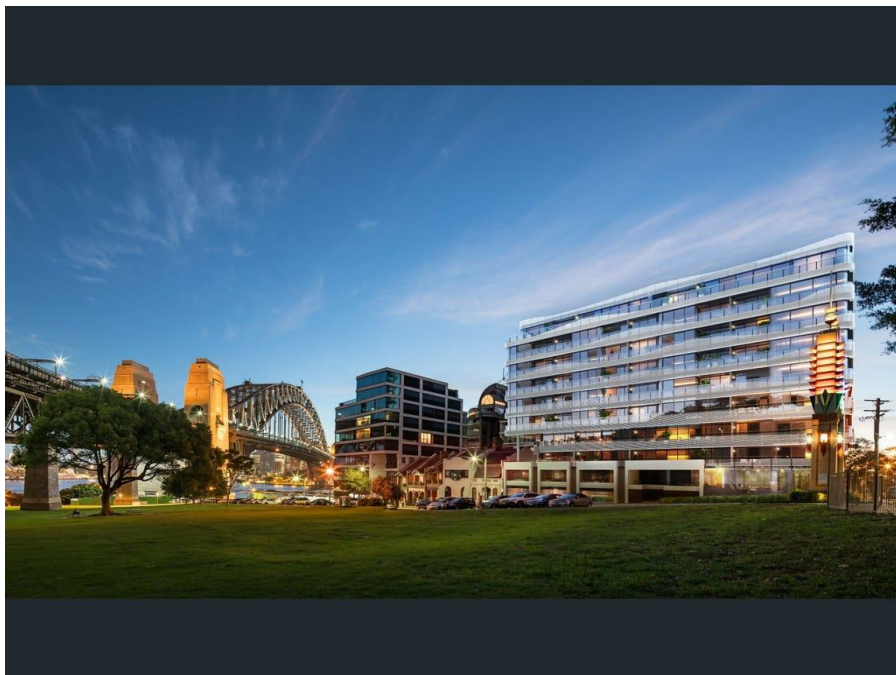


609/30 Alfred St, Milsons Point, NSW 2061

Leased - \$875 per Week

Apartment 1  1 



LUXURY APARTMENT IN "AQUALUNA"

The very best lifestyle, offering a large bright, ultra-modern executive one-bedroom + study apartment with limited water views.....

Large in size, this apartment features engineered wood floors, plush carpets in the bedroom. It comes with a gourmet gas kitchen with stone counters. It also comes with a spacious bedroom with built in wardrobes and a luxury bathroom that is of ample size. Aqualuna is opposite the Bradfield Park, within walking distance to North Sydney, Kirribilli Village and McMahons Point. Offering great connectivity with Milsons Point train station, bus services and Ferry at your doorstep. Aqualuna is surrounded by fantastic cafés, popular restaurants, retail, art galleries, harbour walks and many more local amenities to enjoy.

Features

Separate study area
Ducted R/C Air conditioning
Balcony
Broadband
Internal laundry
Separate storage cage with Lift access
Security building with security intercom
IGA Supermarket downstairs

Please email Ros to register your interest and to arrange an inspection.

Open for Inspection

By Appointment.

Property Features

- Great location with quality fittings.
- Living area & bedroom, both opens onto the balcony
- Ducted R/C Air conditioning.
- Internal laundry & Separate storage cage.
- Separate study area with broadband access.
- Walk to trains, bus, ferry & local cafes.....

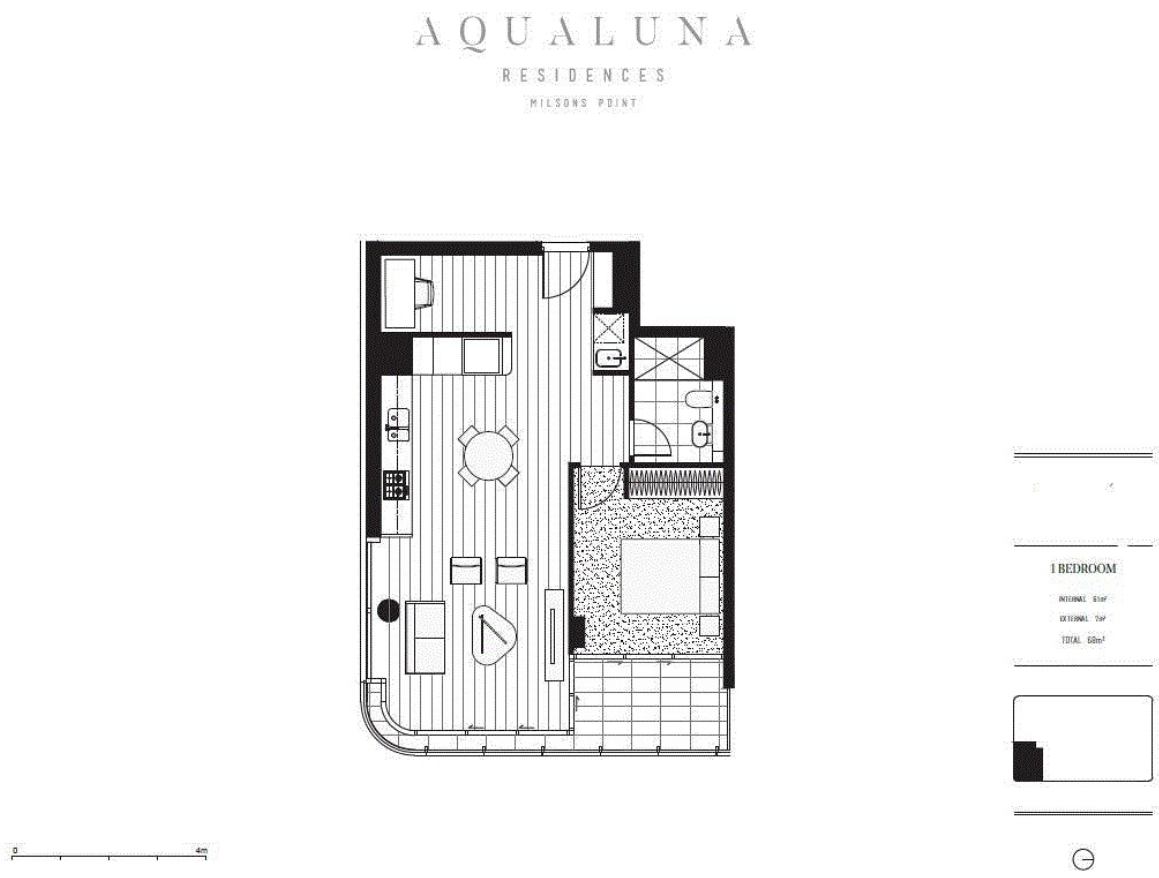
Listed By

Rosalind Oey

Mobile: 0419 694 172



Floorplan



Colliers International does not guarantee, warrant or represent that the information contained in the advertising and marketing document is correct. Any statement printed should include their own preparation as to the accuracy of the information. This includes all relevant to project team, consultants and warranties coming out of the document and any liability for loss or damage arising from them.