

2320/1-5 Cremin St, Upper Mount Gravatt, QLD 4122

Sold - 12/12/2023

Apartment 1   



Beautiful Apartment, Breezy Views, Metres to Westfield!

In a fantastic location for both work and play, this beautifully presented one-bedroom apartment is a surefire investment into your future with immediate returns!

- Gorgeous one-bed apartment with a built-in study nook and extra study room
- Located on Level 3 with great feng shui and balcony with views across the neighbourhood
- Well managed building with heated inground pool, sauna, spa, BBQ area, and extra storage in the secure carpark
- Potential future rental income around \$500-\$525 per week
- Exceptional location: easy walk to Westfield Mt Gravatt and local amenities, 14-minute drive to the city!

Open for Inspection

By Appointment.

Fitted out with fabulous features and placed in a prime position near shops, parks, buses, and so much more, the well managed Sky Gardens complex offers a truly lavish lifestyle. This beautiful, light-filled apartment is accompanied by a secure parking space and storage unit in the complex carpark. With such easy access to express buses to get you to work in a flash, save your fuel for your weekend Gold Coast getaways!

- 150 m to Westfield Mt Gravatt
- 250 m to bus stop with city buses
- 300 m to Upper Mount Gravatt State School
- 500 m to Garden City Bus Interchange
- 500 m to MacGregor State High School
- 900 m to Mt Gravatt Park
- 1.7 km to M3 Pacific Motorway entrance
- 1.7 km to QSAC

Stepping inside this Level 3 unit, natural light spills inside through the tall glass sliding balcony doors, accompanied by LED downlights for an elegant ambience. To the left on your way in, the built-in study nook and storage cupboard is perfect for setting up a work-from-home station or hobby area.

The open plan living space features a modern design with timber-look floors complimented by neutral walls and cabinetry, plus an air-conditioning unit to keep the entire home crisp and cool.

Listed By

Kevin Ahn
Phone: (07) 3344 0288
Mobile: 0488 088 599

Peter Crowther
Phone: (07) 3344 0288
Mobile: 0411 866 008



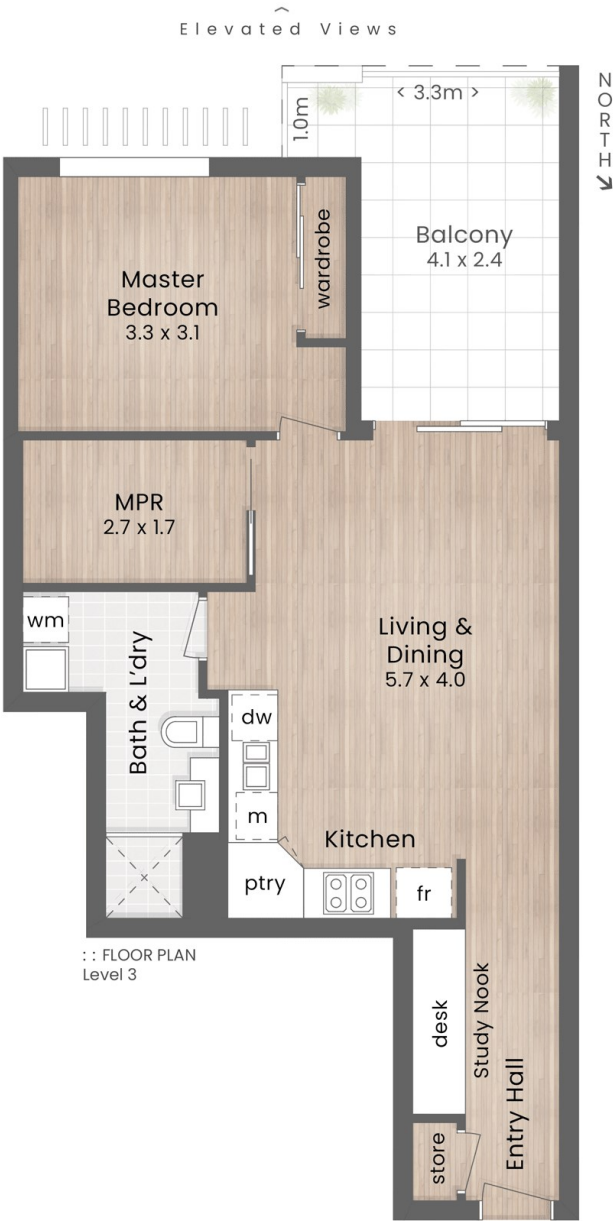
Floorplan

POINTS OF INTEREST

- 1. SKY GARDEN
- 2. Griffith University Mount Gravatt Campus
- 3. Griffith University Nathan Campus
- 4. Nissan Arena | 5. QEII Jubilee Hospital
- 6. Sunnybank Plaza | 7. Westfield Garden City
- 8. Mt Gravatt Plaza
- 9. TAFE Queensland Mount Gravatt
- 10. Westfield Carindale



::: LOCATION MAP



::: FLOOR PLAN
Level 3



::: FLOOR PLAN
Basement

SKY GARDEN 2320/1-5 Cremin Street UPPER MOUNT GRAVATT

1 Bed + MPR + Study Nook 1 Bath 1 Car

Internal 58m² | Balcony 11m² | Total 69m²

LJ Hooker
Property Partners

This is not a legal document therefore all measurements and information provided is subject to survey. No permission is given to use or alter this Floor Plan without the consent of Pure Design Concepts. The overall presentation style, layout, imagery, fonts, background, colours and terminology has been originally created by PDC and is subject to strict copyright. No ownership is taken of building design. Find out more at puredesignconcepts.com.au

pdc.