

308/17 View St, Mount Gravatt East, QLD 4122

Sold - 29/10/2023

Apartment 2  2  1 



SOLD BY LYNDA SIMPSON & JONATHAN WANG

Looking to invest or live in a low-upkeep two-bedroom apartment that is strolling distance to loads of cool amenities but also super-modern, light-filled, and with enough private, covered outdoor space that you can entertain a big group of friends comfortably? Well, the search ends here - in popular Mt Gravatt East, on the fringe of Holland Park.

Highlights:

- Contemporary apartment complex with lift, built just 8 years ago by Mosaic
- Tree-framed city views from a generous 22m2 covered balcony with privacy screening
- Stunning Scandi-look kitchen with high-end black & timber finishes & electric mod-cons
- 5-min walk to restaurants, Home Makers Centre, Seville Rd State School & Goodlife gym
- Sub-5 drive to Mt Gravatt Plaza, Cavendish Rd State High, TAFE Qld & Griffith Uni Mt Gravatt campus

As soon as you drive up to inspect this apartment, you'll be impressed by how good the building it lives in looks from the street - all crisp white render across its three levels, with plant-filled balconies and a smooth driveway down to the secure, underground parking bays.

Safety is a real feature of this property. At the end of a palm-fringed main entry is an intercom system into the building itself - letting you determine who visits or not. Once inside, say goodbye to stairs because this place has a lift to get you up and down with ease.

Smartly designed and impeccably decorated, this gorgeous apartment will wow from the get-go. Down one side runs a fabulous, air-conditioned open-plan kitchen, dining and living area - with concealed laundry. Opposite lies the main bathroom and two fan-cooled bedrooms (main with air-con), both with built-in-robos and one ensuited.

White large format floor tiles tie the stunning social side together, and we love the contrasting dark privacy blind over the screened glass slider that extends the living area onto the entertaining balcony. Out here, there's room for a table for 6 to 8 people - positioned behind slatted side screening that gives privacy but doesn't block out those leafy views - and perhaps a lounge or two next to it.

The central kitchen is exquisite with its chic Scandi design aesthetic and clattering appliances. There's generous above and below bench cabinetry, cool subway

Listed By

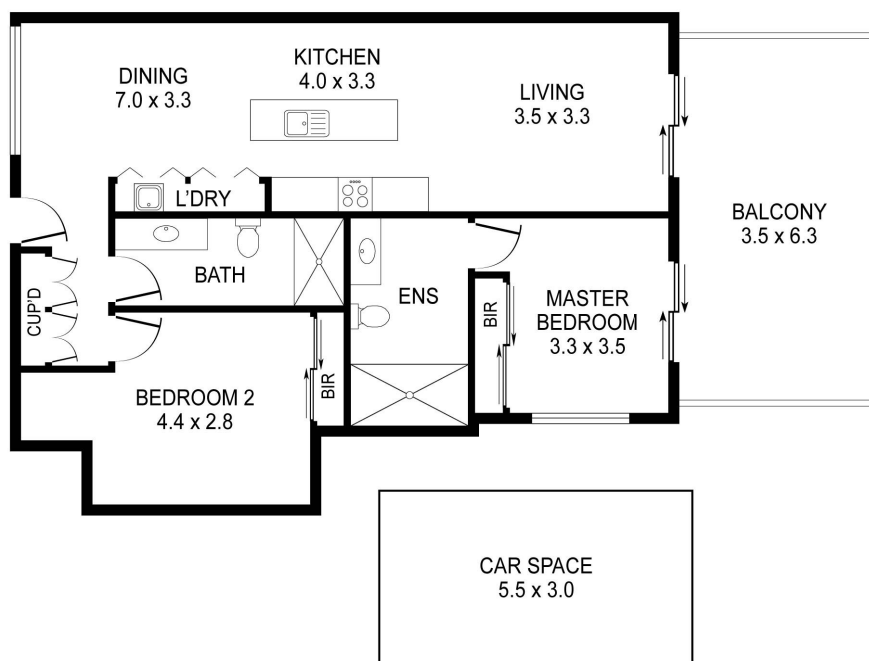
Lynda Simpson

Phone: (07) 3344 0288

Jonathan Wang



Floorplan



Measurements are indicative and in meters. This Floorplan is an indication of the layout of the property.
While every attempt has been made to ensure accuracy, interested parties should make their own enquiries.

Total: **76m²**

308/17 View Street, Mount Gravatt East  x 2  x 2  x 1