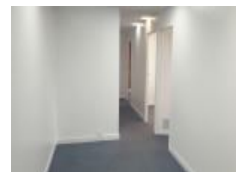


3 Wharf St, Ipswich, QLD 4305

\$14,000 per annum

Medical/Consulting



IPSWICH CENTRAL - SMALL OFFICE

- # Top Position With All The Conveniences
- # Lift Access From Car Park To All Levels
- # Lots Of Natural Light With Views
- # A Fresh Coat Of Paint With Carpet Floor Coverings
- # On Site Secured Car Parking
- # Easy Street Parking At Door
- # Shared Bathroom Amenities
- # Direct Wheelchair Access Is Available From Street

LEVEL 2, SUITE 2 - 50m2 LEASED

Training/Board Room & 2 x Separate Small Offices

Self-Contained Kitchenette

One (1) On Site Secured Car Park

ASKING RENT: \$14,000 GROSS per annum + GST

LEVEL 2, SUITE 5 - 71m2 UNDER OFFER

Ideal Allied Health or Consulting Space

Three (3) Individual Offices, File Area PLUS Reception

Shared Kitchen and Bathroom Amenities

One (1) On Site and Secured Car Park

ASKING RENT: \$19,880 GROSS per annum + GST

Open for Inspection

By Appointment.

Listed By

Cheryl Kermond

Phone: (07) 3812 0288

Mobile: 0409 100 795

