

9 Carson St, Pymble, NSW 2073

Contact Agent!

House 6 4 3



Grand family entertainer with court and pool in a blue-ribbon

Only approx 650m East side to Pymble train station, this is an architecturally designed palatial mansion showcasing absolute luxury and style on a 1,834sqm approx. block in one of Pymble's most desirable blue-ribbon east-side locations.

Open for Inspection

By Appointment.

Majestically situated over level grounds at the end of a quiet cul-de-sac and embraced by resort-like gardens, including a north/south tennis court, sparkling saltwater pool, pool house and gazebo with views and surrounded by other grand estates.

Set over three levels, flooded with natural light, and offering a haven for large family living and entertaining with spacious formal lounge and dining room as well as a separate wing complete with spacious media room, large chef's kitchen and informal dining and family living opening seamlessly outdoor to the pool and tennis court areas. Setting the standard for both outdoor and indoor entertaining, this magnificent family residence offers a downstairs entertaining level with a spacious billiard/games room with wet bar and a 4,000 bottle wine cellar.

A stunning staircase with views over the tranquil surrounds takes you up to the bedroom level with five oversized bedrooms, the palatial master retreat offers access to the balcony, an oversized dressing room and luxurious spa en-suite with stunning views. All the bedrooms offer en-suite access, and a powder room is also provided on the ground level for guests.

Located away from the family living areas, the private home office offers views of the landscaped gardens whilst also offering easy access from the front patio for undisturbed at home meetings.

Splendidly private, this prized grand home is located only 650m easy walk to Pymble Station and in close proximity to the elite schools that the North Shore is famous for, including Pymble Ladies College only 1000m away, and close to Ravenswood, Knox Grammar, Abbotsleigh, Sydney Grammar and Barker College.

Property Highlights

- Blue ribbon 1,834sqm level parcel with tennis court, pool and landscaped gardens
- Formal living and dining rooms, separate media room and open plan family living
- Five generously-sized bedrooms each with ensuite access plus home office/6th bed
- Palatial master suite with dressing room, spa ensuite, sauna and balcony access
- Entertainer's kitchen with butler's pantry and walk in pantry

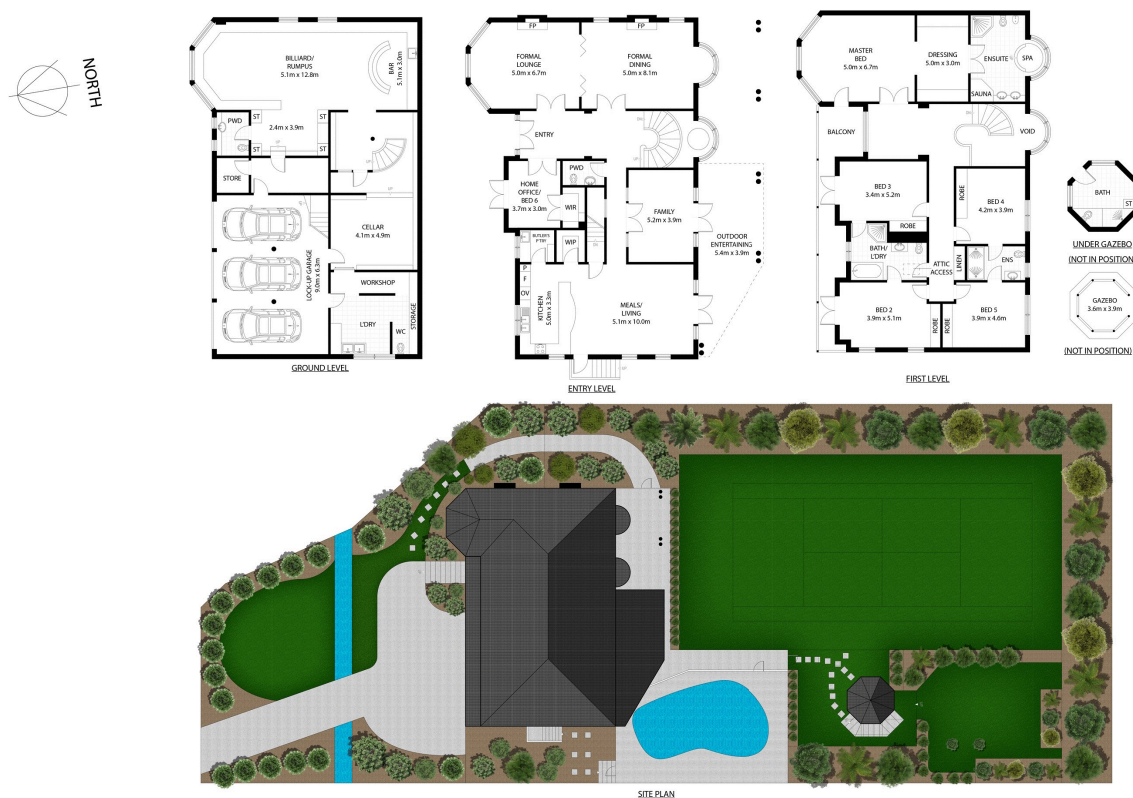
Listed By

The Office
Phone: (02) 9496 8000

The Office
Phone: (02) 9496 8000



Floorplan



GROUND LEVEL AREA 221m² APPROX
ENTRY LEVEL AREA 212m² APPROX
FIRST LEVEL AREA 212m² APPROX
TOTAL AREA 645m² APPROX
TOTAL LAND AREA 1834m² APPROX



Disclaimer: Plans shown are for presentation purposes and are not part of any legal document. All measurements and figures are approximate.