

**11/19 Priory Rd, Waverton, NSW 2060**

**Sold - \$710,000**

Unit 1  1 



## Top Floor Apartment Offering Comfort And Convenience

Quietly placed at the end of a tree-lined cul-de-sac in the popular Priory Lodge complex, this one-bedroom apartment presents a fantastic opportunity for investors or those looking to purchase their first property. The top floor positioning offers an escape from the everyday hustle and bustle and allows for an abundance of natural light with a fresh, airy feel. Comprising of a generous bedroom featuring a built-in wardrobe, modern kitchen, a separate near-new bathroom and flowing lounge and dining area extending out to the covered balcony with a private leafy outlook, this apartment is one not to be missed. Conveniently located with North Sydney CBD and Crows Nest Village both nearby and within easy access to bus and train stations.

### Open for Inspection

By Appointment.

- \* Generous bedroom with mirrored built-in wardrobe
- \* Neat modern kitchen with ample storage
- \* Bright lounge and dining leading to covered balcony with leafy outlook
- \* Near-new bathroom with floor-to-ceiling tiling and frameless glass shower
- \* Single undercover parking space
- \* Shared laundry facilities
- \* Conveniently located within easy access to North Sydney CBD and Crows Nest Village with shops, restaurants and cafes plus bus and train stations

All information contained herein is gathered from sources we consider to be reliable. However, we cannot guarantee or give any warranty about the information provided. Interested parties must solely rely on their own enquiries.

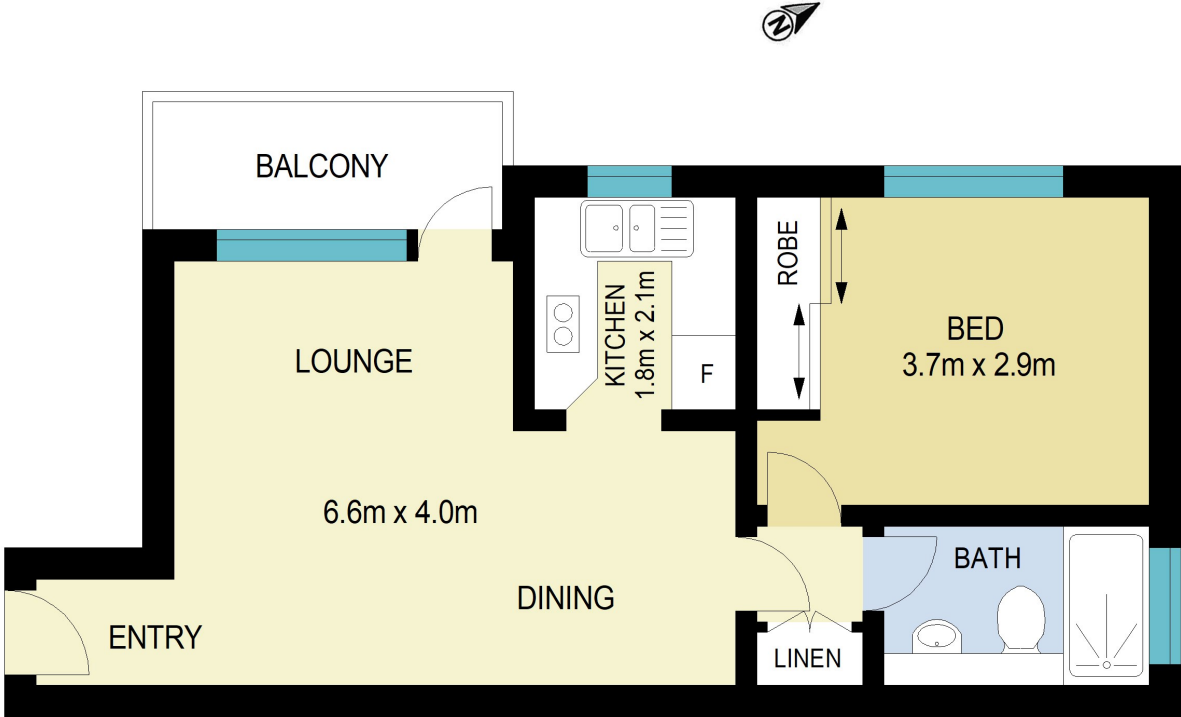
### Listed By

Troy McKinstry  
Phone: (02) 9451 0044  
Mobile: 0424 333 713

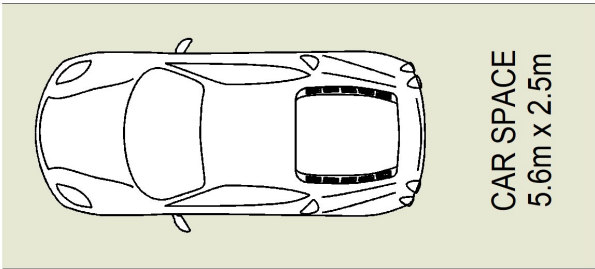
Troy McKinstry  
Phone: (02) 9451 0044  
Mobile: 0424 333 713



Floorplan



TOP FLOOR



GROUND FLOOR

**Waverton**  
**11/19 Priory Road,**  
INTERNAL FLOOR AREA APPROX 41.6m<sup>2</sup>