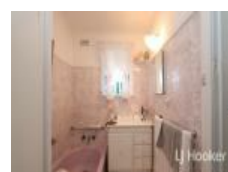


22 Dudley St, Ashford, NSW 2361

\$299,000

House 3  1  2 



Comfortable Cottage on Large Block

- Rural village location
- Approx 60km North of Inverell
- 3 bedroom clad home
- Ceiling fans to all bedrooms
- Open plan lounge/dining/kitchen
- Reverse cycle air conditioning, ceiling fan and gas heating to living space
- Electric timber kitchen
- 3 way bathroom with new shower space
- Great storage
- Gauzed in and covered rear verandah
- Electric hot water system (2021)
- Approx 11m x 7m covered outdoor area
- Older style double garage
- Fully fenced approx. 2023sqm block with separate paddock
- Rear access to property

Open for Inspection

By Appointment.

Disclaimer: All information contained is gathered from relevant third party sources. We cannot guarantee or give any warranty about the information provided. Interested parties must rely solely on their own enquiries.

Listed By

John Devlin
Phone: (02) 6721 0215
Mobile: 0488 999 364

