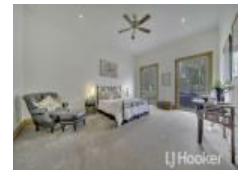


13 Jeanette Maree Ct, Kilsyth, VIC 3137

Contact Agent

House  



A Life of Luxury Awaits!

MORE PHOTOS ARE COMING!

Discover an extraordinary lifestyle at our highly anticipated auction event. Join LJ Hooker Melbourne and LJ Hooker Rowville as we proudly present this meticulously crafted approx. 5-acre estate nestled at the base of Mount Dandenong.

Indulge in luxury and serenity with your very own private fishing lake and a swimming pool featuring a relaxing spa, all enhanced by a regal split-faced sandstone facade. This exclusive cul-de-sac location provides both seclusion and an unparalleled sense of grandeur.

Immerse yourself in sophistication as you step into the elegant marble-tiled foyer. Delight in intimate gatherings by the warm marble fireplace or leave a lasting impression on your guests in the spacious dining room.

Relax and unwind in the open-plan family room, where breathtaking mountain views inspire, and the granite kitchen equipped with top-of-the-line appliances offers a delightful culinary experience.

Additional features include:

- Custom-built timber library
- Open-plan areas with panoramic mountain views
- Stylish kitchen with top-of-the-line appliances
- Dedicated gym room and adjacent sauna with a shower
- High ceilings, sash windows, and double-glazing
- Ample onsite parking with 4 garages and extra spaces
- Additional engineering workshop
- Automatic gated entry ensuring privacy and security
- Zoned air-conditioning
- Proximity to Billanook Primary School, Eastwood Golf Club, Easy access to Eastwood Plaza, Eastland, and Westfield Knox

Listed By

LJ Hooker City Residential

Open for Inspection

By Appointment.

