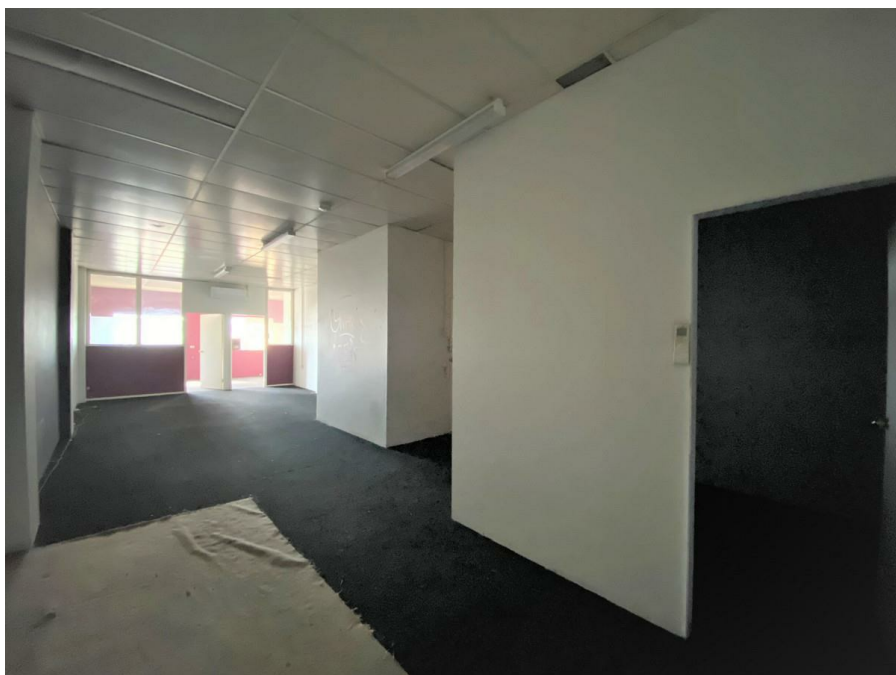


Office 1/19-23 Rooty Hill Road Nth, Rooty Hill, NSW 2766

\$3000 per month plus GST

Office Suite



FOR LEASE

- * Well positioned office space
- * 135 sqm (approx)
- * Staff carpark with rear access
- * 1st floor location
- * Centrally positioned in busy commercial strip
- * 130 metres (approx) from Rooty Hill Train Station

Open for Inspection

By Appointment.

Disclaimer:

Please note that all information herein is gathered from sources we, LJHooker Rooty Hill believe to be reliable. However we, LJHooker Rooty Hill cannot guarantee its accuracy and any interested person/s should rely on their own enquiries. All measurements and distances noted in the above advert are to be considered approximates and to be used as a guide only.

Listed By

Glen Comber
Phone: (02) 9625 3777
Mobile: 0419 435 301

