




204/10 Berge St, Mount Gravatt, QLD 4122

Sold - 26/08/2023

Apartment 3  2  2 



SOLD BY WAYNE MORGAN

Prepare for an unparalleled living experience at this exquisite apartment in Mount Gravatt. Nestled in an unrivalled location, this modern abode offers the perfect blend of convenience and style. Immerse yourself in the vibrancy of this neighbourhood, with trendy cafes, restaurants, shops, schools, buses, and parks all within a leisurely stroll. Boasting proximity to Griffith Uni and Brisbane's CBD, this six-year-old apartment, under the care of a single owner since its construction, presents a remarkable opportunity.

Open for Inspection

By Appointment.

Key Highlights:

- Unrivalled location: stroll to trendy cafes, restaurants, shops, schools, buses, and more
- Close proximity to Griffith Uni and Brisbane's CBD
- Stylish six-year-old apartment with just one owner since construction
- Spacious open-plan lounge and dining area with gleaming ceramic tiles and downlights
- Modern kitchen with sleek stone benchtops and dishwasher
- Sweeping private tiled balcony with downlights and stunning suburb-to-city vistas
- Three timber-look floored bedrooms and two radiant bathrooms

In this incredibly convenient locale, every aspect of your lifestyle is catered to. A short stroll takes you to Mount Gravatt State School, Mount Gravatt State High, and St Agnes Primary School. Additionally, an array of shops, cafes, and restaurants along Logan Road await just 180 metres away. For the pursuit of higher education or upscale shopping, Griffith University and Westfield Carindale are conveniently close. The ease of commuting is unparalleled, with quick access to buses and motorways for all your needs. Brisbane's CBD is also a mere 10.4 km away, allowing you to cut down on your commute.

- 180 m to Logan Road shops, cafes, and restaurants
- 200 m to Mount Gravatt State School
- 200 m to bus stop
- 260 m to Mount Gravatt State High
- 450 m to St Agnes Primary School
- 800 m to Glindemann Park Playgrounds
- 1.1 km to G&K Mount Gravatt West Community Childcare Centre

Listed By

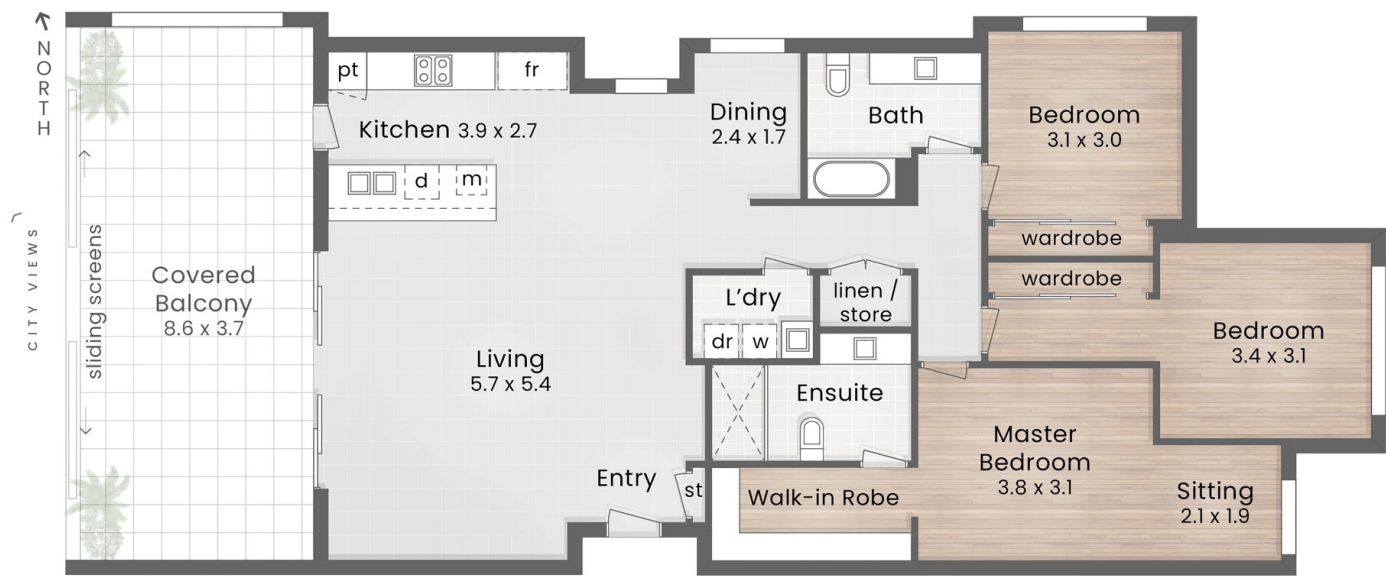
Peter Crowther

Phone: (07) 3344 0288

Mobile: 0411 866 008



Floorplan



:: FLOOR PLAN
Level 2 - 2.7m Ceiling



:: FLOOR PLAN
Ground Level

POINTS OF INTEREST

1. BERGE
2. Griffith University Mount Gravatt Campus
3. Griffith University Nathan Campus
4. Nissan Arena
5. QEII Jubilee Hospital
6. Sunnybank Plaza
7. Westfield Garden City
8. Mt Gravatt Plaza
9. TAFE Queensland Mount Gravatt
10. Westfield Carindale



:: LOCATION MAP

BERGE

204/10 Berge Street MOUNT GRAVATT

3 Bed

2 Bath

2 Car

Internal 133m² | Balcony 36m² | Total 169m²

Carspaces 29m²

LJ Hooker

Property Partners

This is not a legal document therefore all measurements and information provided is subject to survey. No permission is given to use or alter this Floor Plan without the consent of Pure Design Concepts. The overall presentation style, layout, imagery, fonts, background, colours and terminology has been originally created by PDC and is subject to strict copyright. No ownership is taken of building design. Find out more at puredesignconcepts.com.au

pdc.

Listing Number: 3360462

Every precaution has been taken to establish accuracy of the information above, but does not constitute any representation by the vendor or real estate agent.

Page 2 of 2