




189/1-3 Beresford Rd, Strathfield, NSW 2135

Sold - 22/08/2023

Apartment 2  2  2 



Sold - David Pisano

Apartment Living with City Views and North Aspect, 155sqm

Boasting a sun filled north aspect, a total area of 155sqm and panoramic views spanning East to the city skyline, over the North of Sydney / Harbour Bridge and west to the Olympic Stadium this oversized full brick apartment is located on level 10 of the popular "Strathbelle" security complex and is sure to tick all the boxes with a walk to everything location, just moments to station, shops and schools.

- \* Oversized bedrooms with b/ins and balcony access, main with ensuite
- \* Open plan living with air con, full width north facing balcony
- \* Sleek granite kitchen, s/steel appliances, dishwasher, gas cooking
- \* Two modern bathrooms, full sized internal laundry with storage
- \* Two side by side car spaces (46sqm) in secure basement
- \* Security building, lift access, heated pool, spa/sauna facilities
- \* Total area of 155sqm, NBN, full brick building completed in 2002
- \* Perfectly positioned to embrace a lifestyle of ultra-convenience

Strata Levies: \$1,526.85 per quarter approx.

Council Rates: \$326.30 per quarter approx.

Water Rates: \$170.69 per quarter approx.

Details: David Pisano - 0408 835 606

Matthew Mezzapica - 0452 355 606

Open for Inspection

By Appointment.

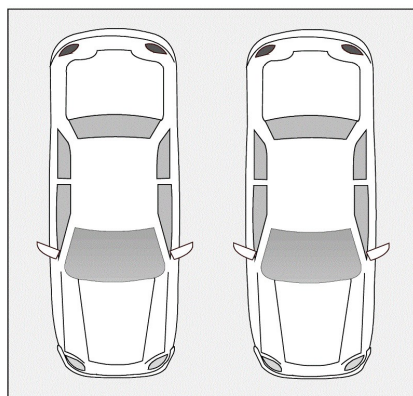
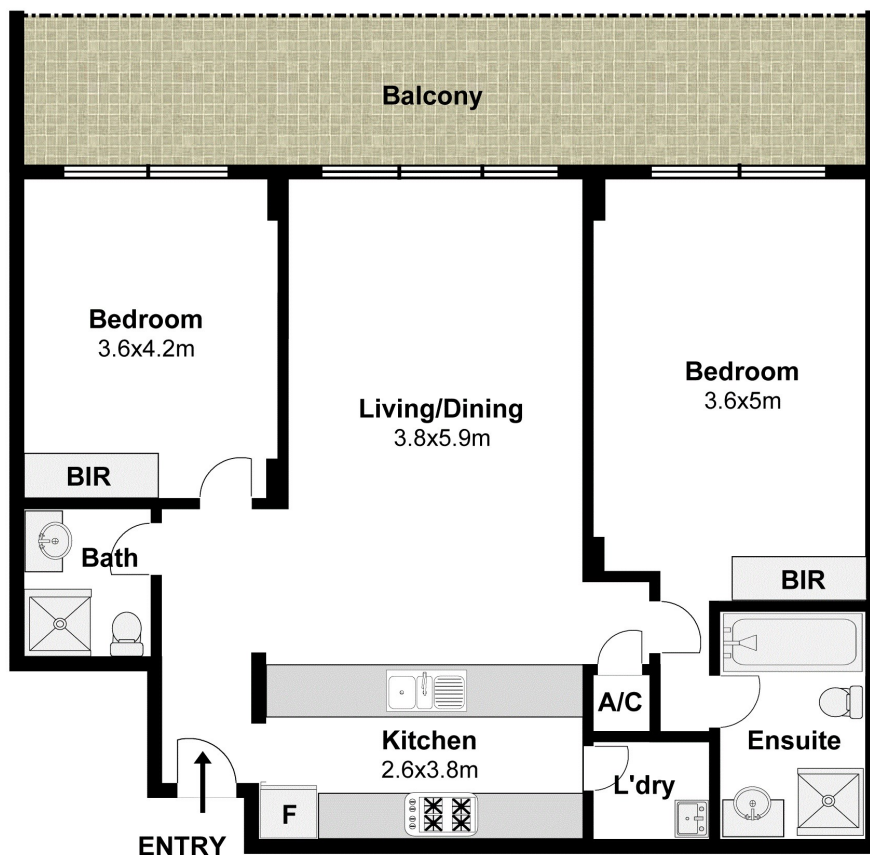
Listed By

David Pisano

David Pisano



## Floorplan



**Secure Car Spaces**

189/1-3 Beresford Road, Strathfield



The following floor plan is shown for presentation purposes only and is not part of any legal document. All measurements and figures are approximate.