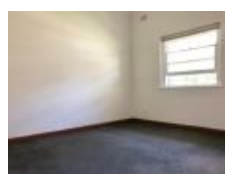


1/28 Gilderthorpe Ave, Randwick, NSW 2031

Leased - \$595 per Week

Apartment **2**  **1** 



HOLDING DEPOSIT RECEIVED

TWO BEDROOM UNIT IN GREAT LOCATION

This two bedroom unit on ground floor features:

- * near new kitchen with gas cooking
- * large living area
- * two spacious bedroom, main with built-in
- * modern bathroom
- * shared Laundry

Open for Inspection

By Appointment.

Surround by plenty of parks and close to Bronte Beach and Bondi Junction. Located in good proximity to schools, public transport, eateries and shops at The Spot.

Available from 09/08/2023.

To inspect, please make a booking via the 'book inspection' button or by clicking on 'Contact Agent' and sending through an email enquiry.

Listed By

Eva Samalova

Phone: (02) 9314 7955

Mobile: 0416 774 866

