

Suite 207, 279B Marius St, Tamworth, NSW 2340

\$15,000 p/a Plus GST

Industrial Land



The Regions Premier Medical Facility

Unique opportunity to be placed right in the heart of the East Tamworth Medical Centre, a 2 room consult tenancy ideal for any consultancy or specialist allied health operator.

- Brand New 2 x Room tenancy of 17m2
- Opposite the regions leading GP Clinic
- Shared Male, Female & Disabled amenities
- Modern award winning Building
- Ducted reverse air-conditioning and basin facility

Open for Inspection

By Appointment.

Listed By

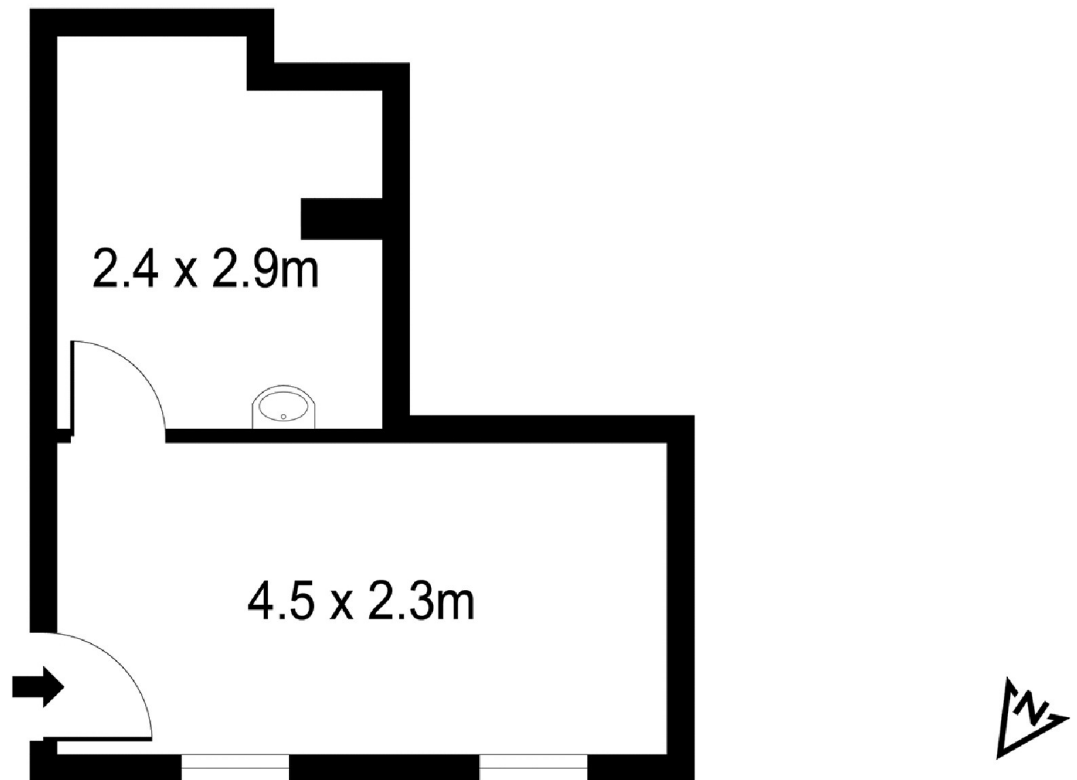
Gavin Knee
Phone: (02) 67661411
Mobile: 0427 669 151



Floorplan

Suite 207

East Tamworth Medical Centre
Level 1, 279B Marius St, Tamworth



burke & smyth
commercial

Total GLA: 17m²

Plan(s) shown are indicative only of layout. Dimensions are approximate.
No warranties or guarantees are given. Interested parties should rely on their own inquiries.
Floor plan by Photography.net.au