

2/4 Bligh St, Tamworth, NSW 2340

By Negotiation

Office Suite



BLIGH STREET PROFESSIONAL CENTRE!

Outstanding modern fringe CBD office tenancy with High-end Commonwealth level fitout all with secure 15 basement car parks. Only 3 other long term tenants reside in the building.

- Outstanding opportunity for corporate office headquarters, consultancy businesses or medical
- Attractive and ergonomic building design with high quality office fit out
- Approx. 480m2 of gross lettable area with street level access
- 15 Secure basement car parks with lift access to ground level offices
- All moments from the CBD and 3-4 blocks from Tamara Private Hospital and the Tamworth Base Hospital
- Combination of open plan design, private offices and large boardroom

Open for Inspection

By Appointment.

Listed By

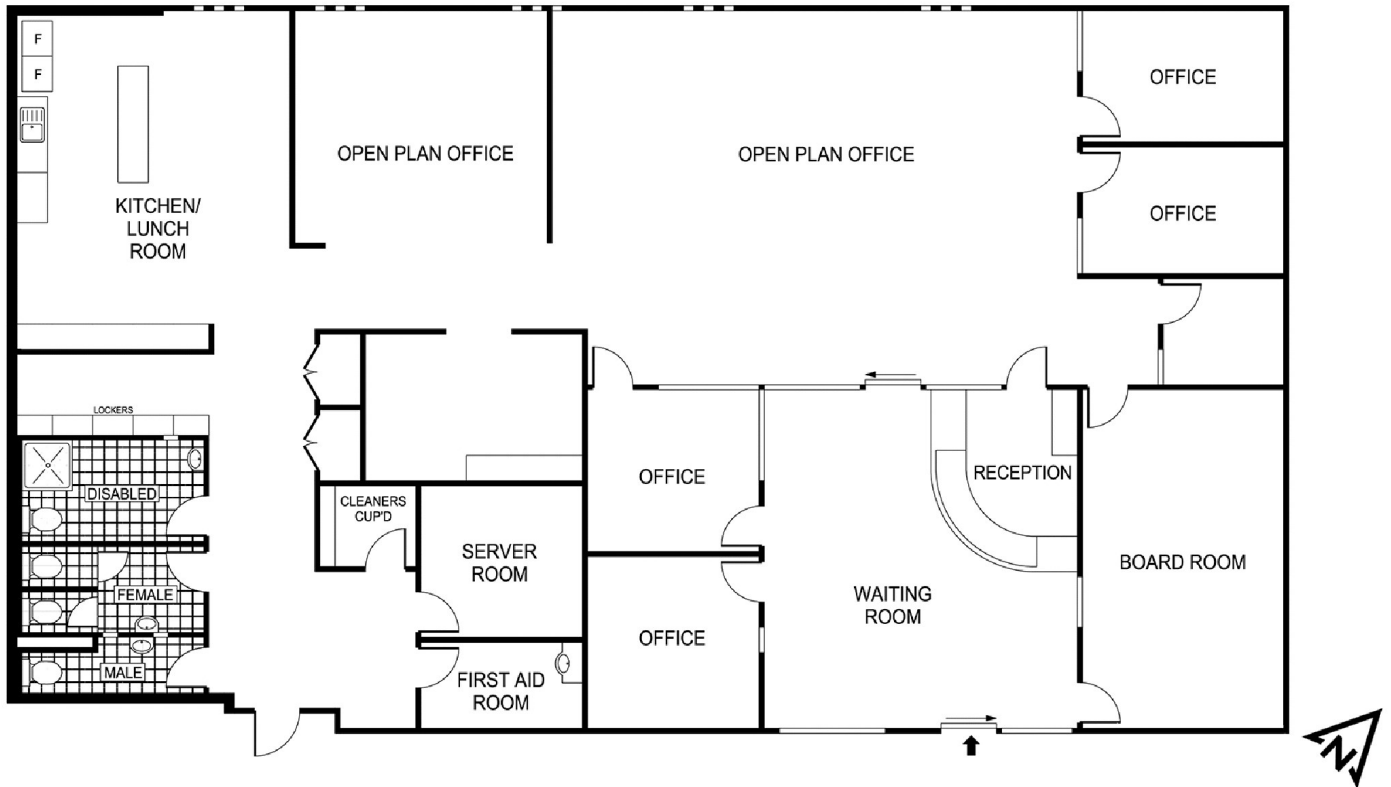
Gavin Knee
Phone: (02) 67661411
Mobile: 0427 669 151

Gavin Knee
Phone: (02) 67661411
Mobile: 0427 669 151



Floorplan

2/4 Bligh St, TAMWORTH



burke & smyth
commercial

Total GLA: 481.34m²

Plan(s) shown are indicative only of layout. Dimensions are approximate.
No warranties or guarantees are given. Interested parties should rely on their own inquiries.
Floor plan by Protophraphy.net.au