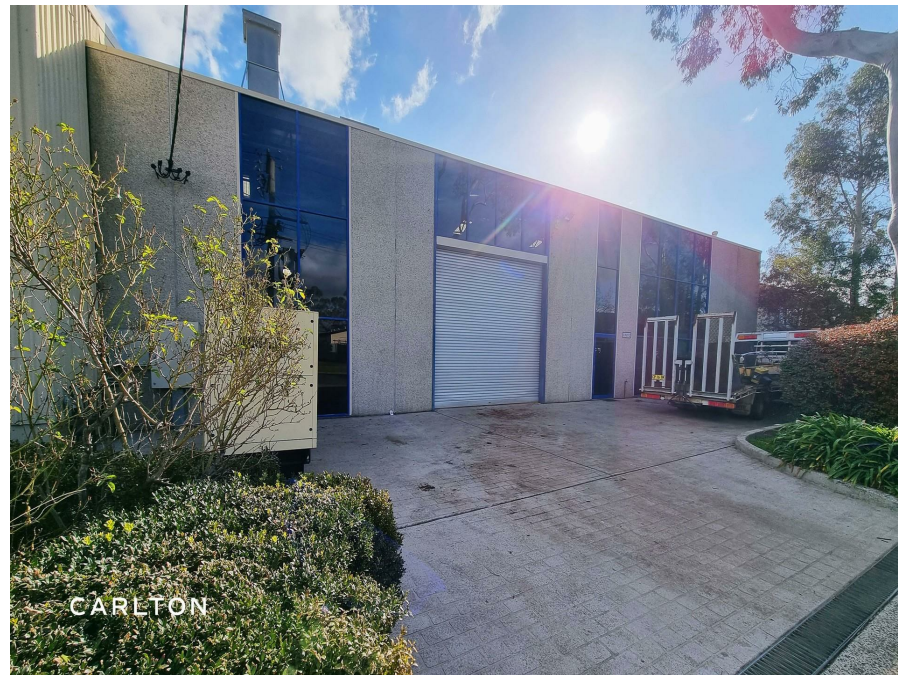


2/28 Priestley St, Mittagong, NSW 2575

Leased - \$85,000

Warehouse



SPACIOUS INDUSTRIAL UNIT FOR LEASE

Located in a thriving industrial hub, this large factory has plenty to offer.

Features:

- High ceilings and ample natural light
- Well-maintained and secure premises
- Reception area and front office
- Flexible layout to suit various business needs
- Easy access for loading and unloading
- Dedicated parking spaces for staff and visitors
- Close proximity to transport and amenities
- Three phase power
- Hi-bay lights throughout

**** PLEASE NOTE FACTORY SIZE TO BE CONFIRMED ****

Ideal for:

- Manufacturing operations
- Warehousing and distribution
- Industrial production
- Workshop or assembly space
- Research and development

Lease Details:

Monthly rent \$7,800 including GST plus outgoings.

Available for lease NOW

Listed By

Rhiannon Hurst

Phone: (02) 48712622

Mobile: 0449 857 648

Open for Inspection

By Appointment.

