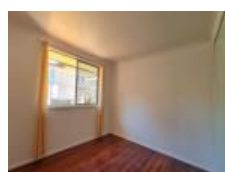


2/9 Kent St, East Toowoomba, QLD 4350

Leased - \$340

Unit 2  1  1 



## Walk to Queens Park

This tidy duplex style unit is located within the highly sought after Caledonian Estate of East Toowoomba, within walking distance to Queens Park, Toowoomba Grammar School and numerous cafe's.

Freshly painted throughout, with gorgeous polished timber floors this charming unit has built in cupboards in each of it's two bedrooms, an air conditioned living area and updated kitchen with electric cooking.

Properties in these areas don't last, so to be sure to book in for one of our upcoming inspections.

At a glance:

- Brick duplex style unit
- Freshly painted throughout
- Polished timber floors throughout
- 2 bedrooms with built in cupboards
- Renovated kitchen with electric cooking
- Air conditioned living area
- Security screens
- Single carport
- Quiet long term neighbour
- Gardening & water included

Please note we do not use 1Form Applications. Our own online application form 2Apply, will be sent to you as a link after you have viewed the property.

**IMPORTANT INFORMATION:** Tenant/s will need to set up their own electricity and gas (if applicable) account directly with the suppliers if your application is approved by the owner. No smoking inside the property, sorry no pets, 6 - 12 month lease available with potential to renew.

### Listed By

Rebecca Gurski  
Phone: (07 ) 4669 1966  
Mobile: 0418 133 828



**Open for Inspection**

By Appointment.