


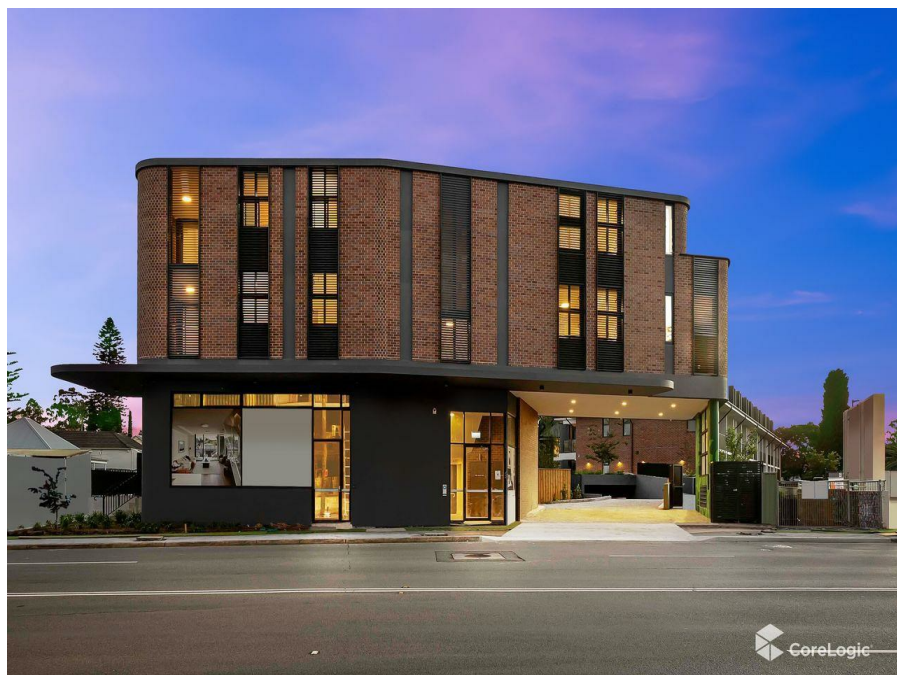


119/402 Liverpool Rd, Croydon, NSW 2132

Leased - \$580

Apartment 1  1  1 



STYLISH AND CONTEMPORARY ONE BEDROOM IN GREAT LOCATION

This residence is set in a stylish and contemporary complex on the border of Ashfield and Croydon. Located in Building B (rear of block) this home features an open plan living with timber flooring, gourmet gas kitchen with Fisher & Paykel appliances and caesarstone benchtops, balcony off the living area with leafy outlook, good sized bedroom with built-in wardrobe, internal laundry and a single secure car space and storage cage. Also includes a video intercom system, communal landscaped gardens, and stylish outdoor areas. Located within walking distance to Croydon Village and Station or Ashfield Mall, shops, restaurant and Station.

Open for Inspection

By Appointment.

Listed By
Anthony Sirianni

Fotios (Frank) Macras

