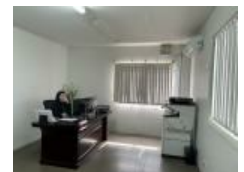


Guildford, NSW 2161, address available on request

Leased - \$40,000

Commercial Shop



OFFICE / WAREHOUSE FACILITY

- 150m2 warehouse / 80m2 office approx.
- Container friendly
- Large hard stand area - 200m2 approx. ideal for container storage
- Air conditioned office space
- Convenient location to major arterial roads including Cumberland Highway
- 3 car spaces
- Separate Male / Female amenities
- Ideally suit a variety of commercial / industrial occupants
- Zoning: IN2 - light industrial (Cumberland Council)
- Flexible lease terms on offer
- Available NOW !!

Contact Agent

Open for Inspection

By Appointment.

Listed By

Rocco Ranieri

Phone: (02) 9630 4888

