

6 Woodbine Terrace , Mirrabooka, WA 6061

Sold - 7/06/2023

House 4  2 



4 x 2 | Bus | Park | Malaga Market

Currently tenanted and the tenant is willing to stay in this excellent Property

// Property

Elevated Cul-de-Sac LOCATION with space for a truck or a boat (Feng Shui facing North West)

Beautiful Gardens front and back yet significant easy care low maintenance

Close to Malaga Markets and Honeywell Village

Close to Bus School and Shops

Potential Rent \$650 per week

Open for Inspection

By Appointment.

This stunning 4 bedroom 2 bathroom home which is tucked away with views overlooking peaceful Apple Blossom Polyantha Reserve and nearby Koondoola Regional Park at the end of the cul-de-sac is all sweetly located between both Malaga Markets and Honeywell commercial hubs

Inside find two deluxe bathrooms four sizeable bedrooms with nothing to do here but move in and enjoy the alfresco and nearby park locations and more

With room to baby boom discover lots of inner and outer space including formal lounge dining open plan kitchen meals family minor bedrooms two with BIRs all this complete with ducted air con and gas heating making this a comfortable home on any summers day or winters night

Outside unwind under the large wrap around patio with outdoor lighting while you watch your friends and family having fun in the sun on the large elevated landscaped lawn and this 672sqm block still has room for the pets swings trampolines a workshop and potential a granny flat

The automatic garage provides a direct access to the backyard and the potential for drive through access if required and there is a large gate allowing side access for a truck if required

Large Spacious & Beautifully presented this 4 Bedroom 2 Bathroom Property offers the following :

- * Quality built kitchen with stone surfaces gas cooking quality stainless steel appliances plenty of storage
- * Large amount of rear and side access with big hard stand areas
- * Nice size master bedroom with walk in robe and ensuite

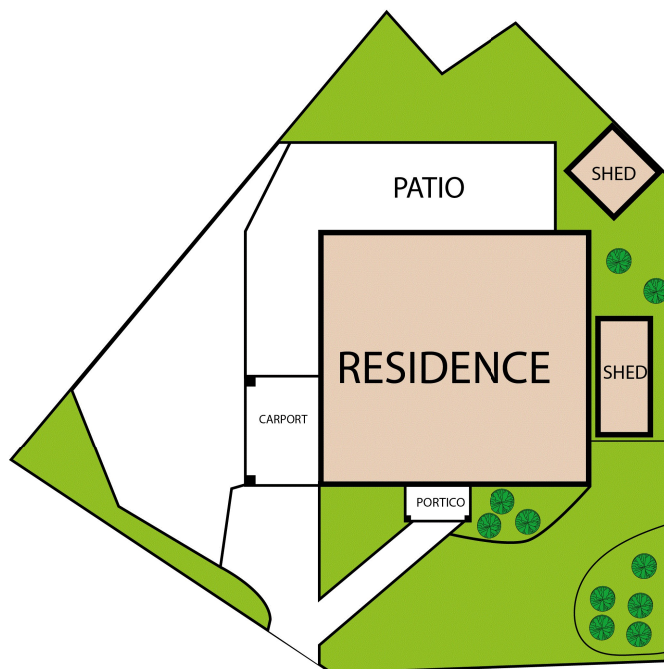
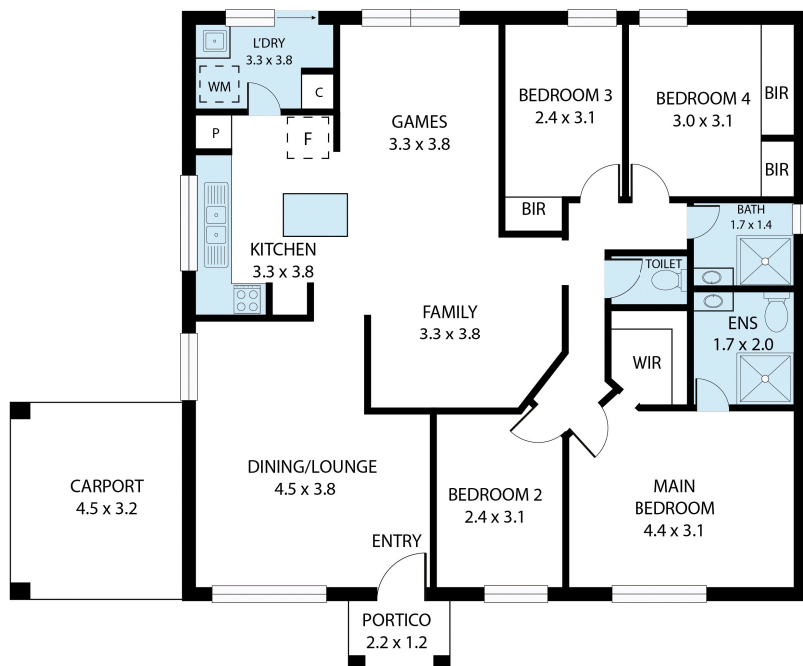
Listed By

Eddie Carver
Phone: (08) 9344 5577
Mobile: 438933506

John Samykannu
Phone: (08) 9344 5577
Mobile: 0411 263 175



Floorplan



6 Woodbine Terrace, Mirrabooka 6061

Whilst every attempt has been made to ensure the accuracy of the floor plan contained here, measurements of doors, windows, rooms and any other items are approximate and no responsibility is taken for any error, omission, or misstatement. This plan is for illustrative purposes only and should be used as such by any prospective purchaser.

APPROXIMATE BUILT AREA

BUILT AREA	: 97m ²
CARPORT	: 9m ²
PORTICO	: 2m ²
TOTAL BUILT AREA	: 108m²