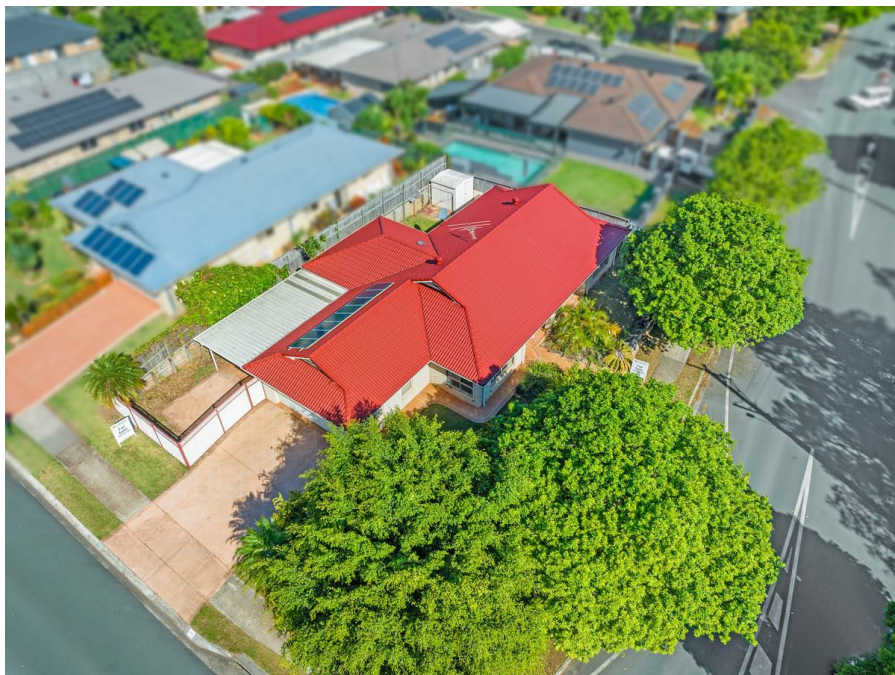


96 Salisbury St, Redland Bay, QLD 4165

\$699,000 Built 2002

House 3  2  2 



## Real Value - Must See Home!

Lowset Brick Home  $\frac{1}{2}$  Built 2002  
Potential to convert to 4 Bedrooms  $\frac{1}{2}$  See Plan  
Sought After Central Location  
Easy Walk to Waterfront & Shopping  
New Woolworths & Hospital within 1.5km\*  
Main Bedroom with Ensuite  
Double Size 3rd Bedroom  
Huge Main Bathroom  
Family Size Kitchen with Breakfast Bar  
Separate Tiled Loungeroom  
Spacious Open Plan Family & Dining Area  
Massive 8 x 4m Entertainment Area  
Double Lock up Car Accommodation  
\*Potential for Caravan or Boat Parking  
Elevated & Level 621sqm Allotment

Extras  
3m x 3m Garden Shed  
Solar Power  $\frac{1}{2}$  8 Panels  
2 Split System Air Conditioners  
Dishwasher  
Ceiling Fans

Redland Bay is an undiscovered Gem on the coast only 45kms from the Brisbane CBD. With redevelopment underway of the Waterfront Precinct, including a State Government Funded Satellite Hospital and a new Full-Line Woolworths just completed now is a great time to live or invest in this rare untouched Waterfront Suburb

500m Childcare Centre  
850m Primary School

### Listed By

The Office  
Phone: (07) 3286 2500

### Open for Inspection

By Appointment.

