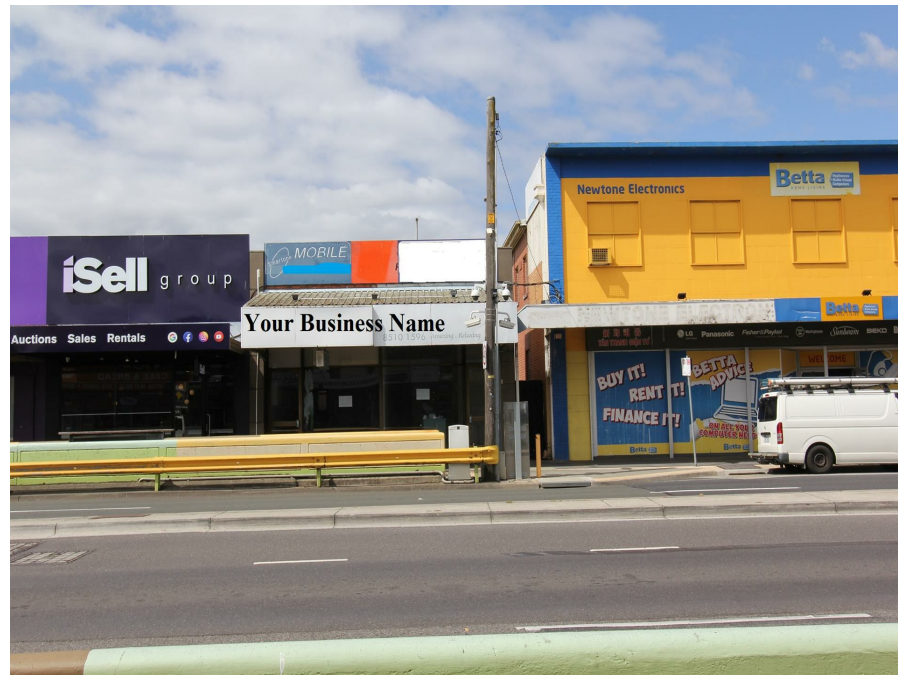


289 Springvale Rd, Springvale, VIC 3171

\$6000 per Month, plus GST & out
goings

Retail Shop



Great Position on Springvale Road Available NOW

Available now a larger shop with an approximate floor area of 110 m2 plus additional service rooms, close to Springvale Railway station and located on busy Springvale Rd nestled between iSell and Beta Home Living offers great exposure for your business.

Currently partitioned into two shops by a dividing wall each shop has its own entrance door to Springvale Rd, staff facilities and a door to the rear car park that provides a total of 6 private parking spaces. The combined the shop frontage is approximately 8m in width and 13.5m in depth giving each shop a potential floor space of 55m2 plus their associated staff facility.

Call us on 03 9547 7222 to arrange an inspection.

Outgoings less than \$7000

Open for Inspection

By Appointment.

Listed By
Theresa Huynh

The Office
Phone: (03) 9547 7222

