

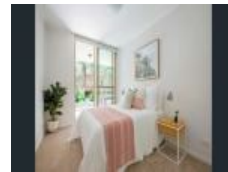


326/168 Queenscliff Rd, Queenscliff, NSW 2096

Leased - \$1,000

Unit 2  2 



DEPOSIT TAKEN! - OPEN HOME CANCELLED

Spacious Two Bedroom Apartment In Highly Sought After Complex!

Exquisite open floor plan with bedrooms flowing out onto the generous north-facing terrace overlooking immaculate landscaped gardens. This luxurious resort-like haven is ideal for professionals, young families and downsizers alike.

- Expansive open plan living/dining extending onto terrace
- Contemporary gas kitchen with Miele appliances, including dishwasher plus Corian benchtops/breakfast bar
- Carpeted throughout
- Master suite with walk-in robe, contemporary ensuite and direct access onto terrace
- Generous second bedroom with built-in robe and direct access to terrace
- Modern main bathroom with separate bath and shower
- European-style laundry
- Large, versatile study area
- Security complex with one allocated car space, visitor parking and intercom
- On site gym amenities

In close proximity to both Queenscliff and Manly Beaches, Keirle park, Manly Golf Course, Warringah mall and more! Get in quick, this property won't last long!

Got a question? Contact Emma on 0452 588 603

Open for Inspection

By Appointment.

Listed By

James Smyth
Phone: (02) 9905 4100

