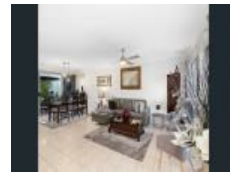
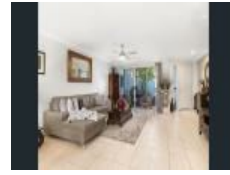


11/100 Cotlew Street East , Southport, QLD 4215

Leased - \$770

Townhouse 2 2 1



## Immaculate Villa at 'Adelphi Springs' Estate

This luxury two storey 2 bedroom villa provides a luxurious private lifestyle with amazing facilities right in the heart of the Gold Coast.

**Open for Inspection**

By Appointment.

Set amongst 10 acres of tranquil tropical gardens, flanked with fountains and ponds, the grounds are really something else. The first class resort like facilities of this estate include two outdoor pools, an indoor heated lap pool, 24/7 CCTV, a heated spa and an air conditioned fully equipped gym; for all round year enjoyment.

The downstairs is dedicated to an open plan kitchen, living and dining area that opens out to the rear courtyard, shaded by palm trees for pleasant alfresco dining and outdoor enjoyment. As well as a powder room and laundry.

Upstairs are two generously sized bedrooms, master with ensuite, and a separate bathroom. Plus a study / home office or media room.

The property features:

- ? Two private courtyards and ground floor living
- ? Two large bedrooms with built-ins
- ? Two bathrooms & powder room
- ? Single lockup garage with internal access to villa
- ? Study / Home office or second living area
- ? Close to shops, school and Pindara private hospital
- ? Mediterranean architecture & design
- ? Security gating, intercom, and 24/7 CCTV throughout
- ? Three pools - heated indoor & 2 outdoor
- ? Spa, gymnasium, BBQ & dining areas

This central Southport location is close to all amenities including shops, restaurants, cafes, a major shopping centre, major public and private schools, including The Southport School & St Hildas. Only a short drive to the beautiful Gold Coast beaches, Chevron Island and Surfaces Paradise.

? Southport Golf Club - 2.9km

### Listed By

John McCormack

Phone: (07) 5591 5222

Mobile: 0411 879 468

