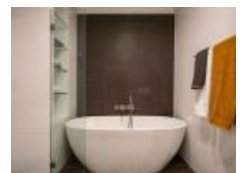


35/230 Elizabeth St, Surry Hills, NSW 2010

Sold - \$755,000

Apartment 2  1 



Bright Inner City Oasis Metres From Parks, Transport & Resta

Fully renovated two-bedroom in Elizabeth House.

It doesn't get more central than this with world-class transportation, restaurants, bars, walks, and bike rides on your doorstep. Inner city living at its best.

This is all about location, location, location. There's a new gym next door and a city skyline view from the renovated communal rooftop perfect for entertaining. Quiet laneways and Sydney's best coffee shops are also metres away.

Have breakfast on the go and walk or bike to work. Enjoy practical amenities such as hairdressers, supermarkets, shops, and Chinatown's best Yum Cha close by.

You'll love its superb location catering to all the best Sydney has to offer from cinemas, theatres, shops, restaurants, bars, and art galleries. It is a 10-minute walk to Crown Street or the CBD and a 10-minute ride to the Opera House and Sydney's spectacular Harbour.

- Sunlit 2 bedroom, 1 bathroom apartment with large windows and spectacular view.
- Cleverly renovated with spacious built-in bedroom wardrobes. Custom storage in the kitchen, lounge room, and the large bathroom offers easy living.
- Renovated kitchen features a marble island, induction cooktop, half dishwasher, and stainless steel finishes including a Smeg oven.
- Versatile living area to create your dream home filled with natural light and clever lighting features.
- Close the large double-glazed windows and enjoy the peace and quiet perfect for studying or a cosy night in.
- Newly painted, new floorboards, ceiling fans, and inbuilt heating/air conditioning offer year-round comfort.
- Spacious renovated bathroom with stunning wall-to-wall tiles, separate bath and shower, extra storage, and inbuilt 'hide away' laundry.
- All the practical assets you need. This is low-maintenance urban living at its best.
- Short stroll in each direction to Central Station, Belmore Park, Harmony Park, Hyde Park, Prince Alfred Park, and Swimming Pool. The University of Sydney, the CBD, Woolworths Metro, and Coles are also minutes walk away.
- NBN available.
- No need for a car but you can access a residential parking permit for less than \$100 annually.
- Offered with fridge, microwave, and a designer custom book/display shelf.
- Ideal for a couple, first home owner, or investor. Excellent capacity for easy rental.

Listed By

David Servi

Open for Inspection

By Appointment.

