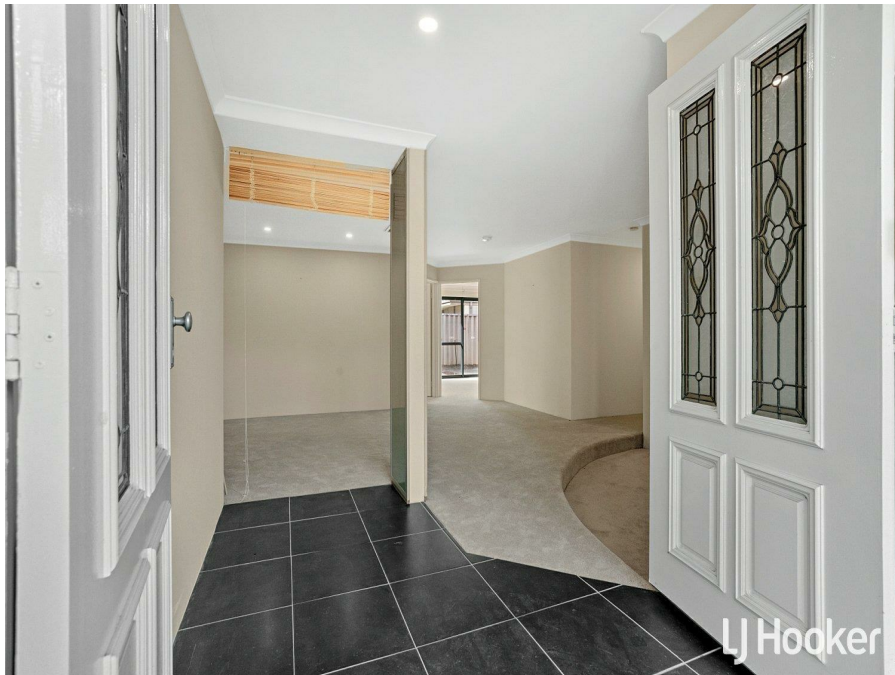


10 Gocean Ave, Bentley, WA 6102

Leased - \$800

House 6 3 2



GET LOST IN YOUR OWN HOME

With 5 big bedrooms, all with built-in robes, 2 with their own ensuite, a study that's bigger than a standard bedroom, 3 big living spaces, a huge kitchen area plus a huge double garage, you could have 2 families living here and never see each other.

There is also side access next to the garage for a boat or caravan, whatever you need to park away. All of this with Ducted air con throughout, high ceilings, gas cooking, oodles of storage, and all the bonus features you could wish for.

Put this huge home in this tidy little pocket south of Leach Highway with multiple restaurant options in easy walking distance, Carousel just down the road, multiple public travel options to get you to the City, Carousel, Universities, and even Freo you know you picked the best location.

Features:

- * 5 big bedrooms
- * Study could be a sixth bedroom
- * 3 bathrooms
- * 3 Huge living spaces
- * Ducted evaporative air conditioning throughout
- * Huge kitchen with shoppers entry
- * Loads of storage
- * Solar panels
- * Double garage plus side access
- * Cute gazebo for outdoor meals
- * Fantastic easy-access location

Please note alarm and automatic reticulation are not part of the lease.

- Pets considered
- Unfurnished
- 6 or 12 months initial lease term

Listed By

David Lagrenade
Phone: (08) 9473 7777
Mobile: 0417 954 984

Open for Inspection

By Appointment.

