
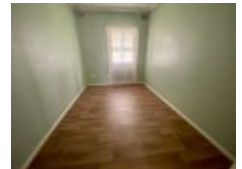



**230 Peachey Rd, Smithfield Plains, SA 5114****Leased - \$360**House 3  1 **Great Three Bedroom Home!**OPEN INSPECTION TIME: Apply online at: [www.tenantooptions.com.au](http://www.tenantooptions.com.au) to view

Rent: \$360.00 Per week

Bond: \$2,160.00

Available Date: 09/11/2022

6/12 Month Lease

Pets Negotiable

Smoking outside only

**Open for Inspection**

By Appointment.

You are required to complete an application form online prior to viewing. If your application looks suitable, you will be contacted to organise a viewing time. There will be no exceptions to this process.

Apply online at: [www.tenantooptions.com.au](http://www.tenantooptions.com.au)

Located close to shops, school and transport in the area of Smithfield Plains this home features 3 large bedrooms, open plan lounge/dine. The walk through galley style kitchen offers plenty of cupboards and electric stove. Heating and cooling for year round comfort. Outside has lock up carport with roller door. Pet neg.

LJ Hooker Craigmore | Elizabeth | Salisbury: the number one Real Estate Agents / Sale Agents and Property Management in the Northern Suburbs of South Australia.

Specialists in: Andrews Farm, Angle Vale, Blakeview, Burton, Craigmore, Davoren Park, Elizabeth and surrounding, Gawler, Hillbank, Munno Para, One Tree Hill, Parafield, Para Hills, Paralowie, Salisbury, Smithfield.

**Disclaimer:**

We have in preparing this document used our best endeavours to ensure the information contained is true and accurate, but accept no responsibility and disclaim all liability in respect to any errors, omissions, inaccuracies or misstatements contained. Prospective tenants should make their own enquiries to verify the information contained in this document.

RLA155355

**Listed By**

Wolf Voss

Phone: (08) 8255 9555

Mobile: 0419 819 260

