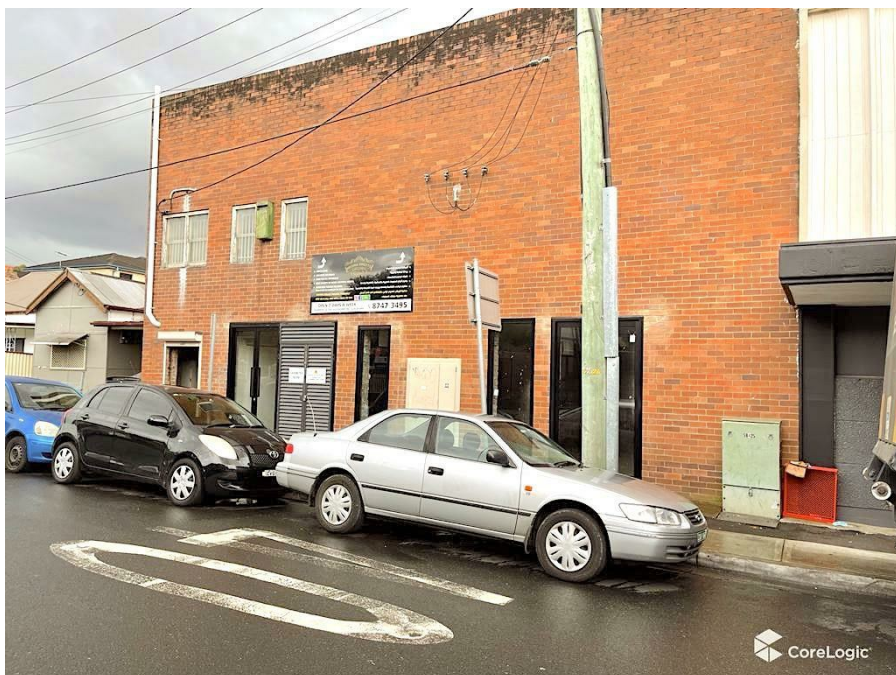


340 Guildford Rd, Guildford, NSW 2161

Contact Agent

Office Suite



HIGH PROFILE LOCATION IN THE HEART OF GUILDFORD

Retail & office space strategically located in high pedestrian thoroughfare in the heart of Guildford shopping district. Prime ground floor space from approximately 100-220 sqm is perfect potential (S.T.C.A.) for medical centre, grocery, butcher, bakery, deli fast food/restaurant and gym/fitness or function centre. Upper floor space approximately 166 sqm is suitable for accountants, solicitors and remedial massage.

Open for Inspection

By Appointment.

Property Highlights:

- Zoning: B2 Local Centre
- Located prominently on the corner of Guildford Road and Cross Street amongst established residential buildings
- Walk to Guildford train station, bus/railway transportation
- High foot traffic area
- Flexible layout to suit an array of businesses
- Convenient street and ample onsite parking for customers
- Commercial grease trap and high power supply provisions
- Flexible lease terms and available for immediately occupation.

Don't miss out on this rare business opportunity!

For further information, please contact Ken Chua on 0433 757 895 or Evan Botani on 0416 381 700.

Disclaimer: R&W Fairfield give notice that all information given whether contained in this document or given orally, is given without responsibility and we cannot guarantee or give any warranty to the information provided. Interested parties must rely solely upon their own enquiries. All dimensions and figures given are only approximate.

Listed By

John Lye
Phone: (02) 9723 6188

John Lye
Phone: (02) 9723 6188

