

Unit 1/183 Nursery Rd, Holland Park West, QLD 4121

Sold - 25/10/2022

Apartment 3  1 



Your dream starts here - FIRST HOME OR INVESTMENT

Don't be fooled by the humble appearance from the outside. Situated in a block of brick-clad units, this low-maintenance, ground floor apartment has a modern and fresh feel. A trendy and comfortable abode that will attract tenants galore, or suit a young couple or family starting out, this gem boasts a private outdoor sitting, chic kitchen, easy-care tile and vinyl flooring throughout and proximity to everything.

Open for Inspection

By Appointment.

Only a 12-minute drive to Brisbane CBD, it does not get better than this. There is a bus stop right outside too, and you can easily stroll to the local shops, takeaways, cafes, childcare centre, chemist, doctors, park and more. Both the Mount Gravatt State High and Primary schools are a 13-minute walk or less away, with both Westfield Garden City and Westfield Carindale as well as Griffith Uni Nathan and Mount Gravatt campuses less than a 10-minute drive away. Offering exceptional convenience, investors will have no problems attracting quality tenants, and first timers won't have to sacrifice on proximity to get onto the property ladder with this affordable home.

At your door step you can expect access to your own carport, as well as a secure laundry with ample storage space.

A massive master bedroom with a split system aircon is found at the rear of the apartment and features a huge wardrobe, providing you with plenty of storage. A huge second bedroom with plenty of storage and access to yard. The sizeable third bedroom - making it ideal as a children's bedroom or nursery.

A contemporary, shared bathroom is available to occupants, with a big shower, single vanity, and separate toilet.

Other great features include:

- Fly screens throughout
- Large linen/storage cupboard
- Fully insulated
- NBN connectivity

An affordable and stylish starter home or investment, this modern abode is a must see.

Call Vipin - 0452 202 529 to arrange your private inspection or look forward to seeing you at the open home....

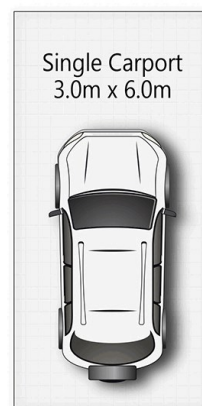
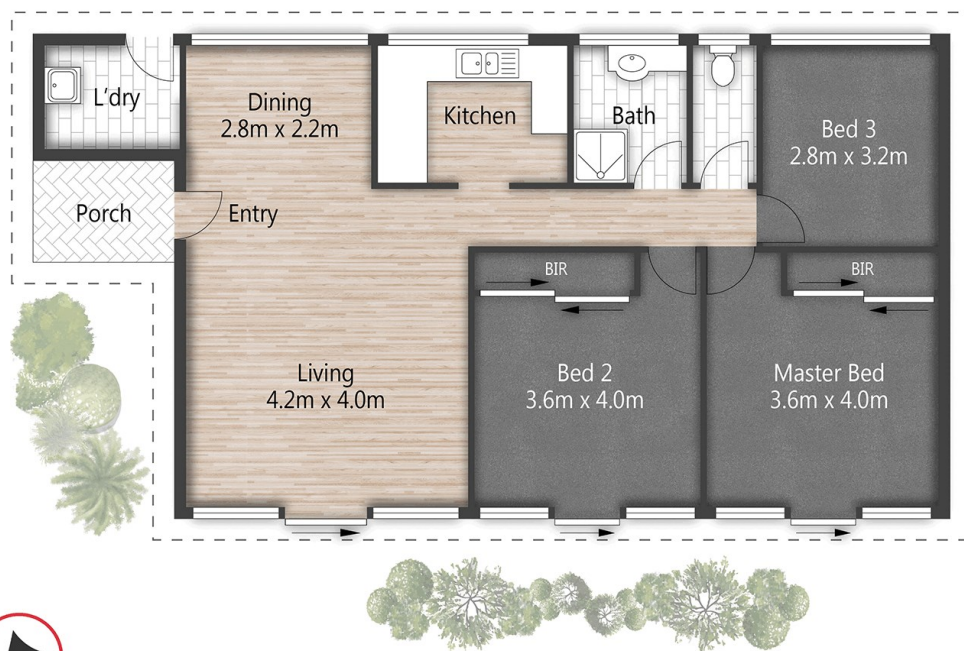
Listed By

Ashish Chawla

Phone: (0429) 053 007



Floorplan



(Not In Position)



1/183 Nursery Road **HOLLAND PARK WEST**

3 | 1 | 1 | 107m²



All dimensions are approximate; they are subject to errors and inaccuracies and no liability will be accepted.
 Plans are shown for marketing purposes only.