

36 Cummins St, Unanderra, NSW 2526

Leased - \$770 per Week

House 4 2 2



The bigger the better, four bedroom family home!

Presenting an ideal family home, this double-brick property boasts an easygoing family lifestyle with updated interiors and an inspiring leafy outlook. Offering an abundance of natural light, impressive dimensions and a versatile floorplan, this four-bedroom home is not to be missed. Highlighting -

Open for Inspection

By Appointment.

- Generous spaces and immaculate presentation throughout including easy care timber flooring and plantation shutters
- Open plan kitchen and dining features a sleek design, electric cooktop, dishwasher and ample cabinetry
- Spacious light-filled lounge room with air conditioning for your comfort
- Three upstairs bedrooms all with ceiling fans and built-in wardrobes, and a fourth downstairs bed/study
- Renovated main bathroom presents sparkling floor-to-ceiling tiles, a deep freestanding bath and high-quality fixtures and fittings
- Internal laundry with separate downstairs toilet and an incredible amount of storage options
- Front and rear covered balconies, tree-sheltered entertainer's deck, and established gardens with rear storage shed
- Downstairs highlights not only a double garage, and additional shower but a workshop, bar area and storage room.
- Family sized enclosed grass yard
- Located centrally to schools, transport and shopping districts
- Pets accepted upon application

BOOK AN INSPECTION NOW REFER TO DETAILS BELOW Realestate.com.au only.

1. To book an inspection click the button "REQUEST A TIME" and enter your details.

2. Register to join an existing inspection or; If no time is offered, please register so we can contact you once a time is arranged

NOTE If you do not register, we cannot notify you of any time changes, cancellations or further inspection times

TO APPLY NOW – Refer to Below <https://www.2apply.com.au/?Agency/?CBP>

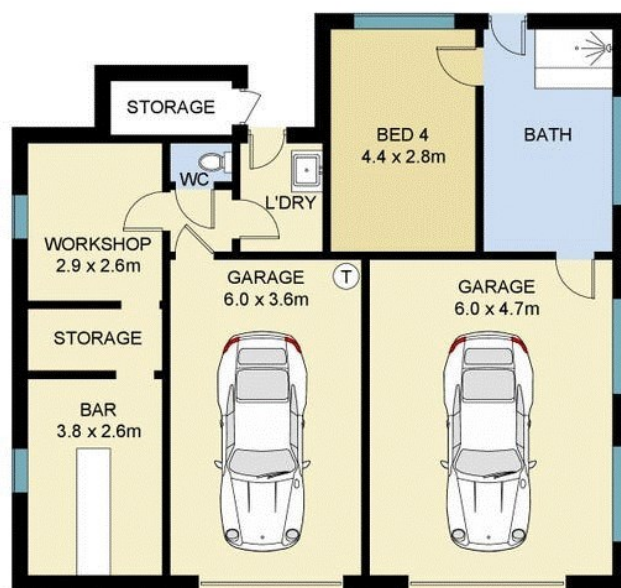
Listed By

Lisa Rapsey

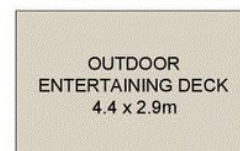
Phone: (02) 4228 8400



Floorplan

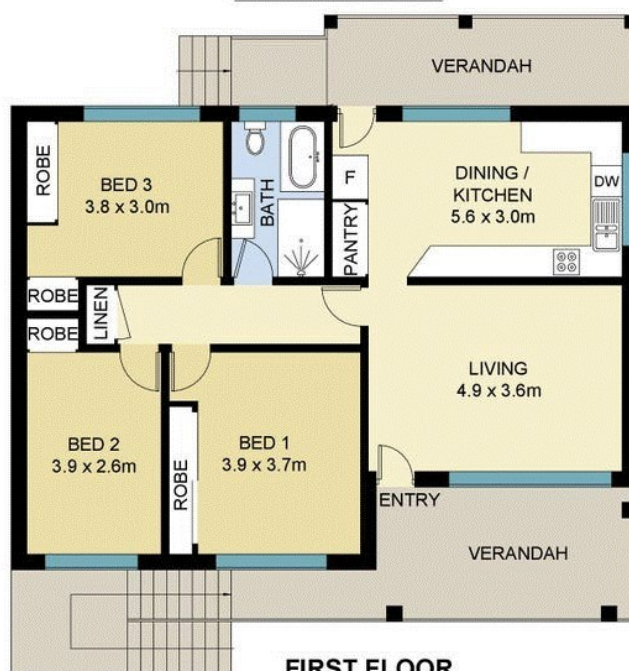


(NOT SHOWN IN ACTUAL
LOCATION / ORIENTATION)

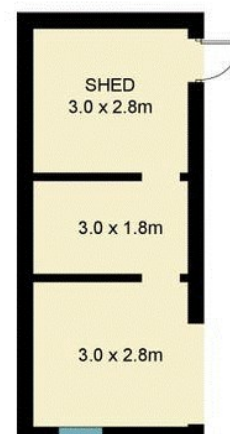


GROUND FLOOR

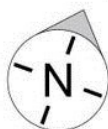
GROUND FLOOR



(NOT SHOWN IN ACTUAL
LOCATION / ORIENTATION)



FIRST FLOOR



36 Cummins Street, Unanderra

Scale in metres. Indicative only. Dimensions are approximate. All information contained herein is gathered from sources we believe to be reliable. However, we cannot guarantee its accuracy and interested persons should rely on their own enquiries.