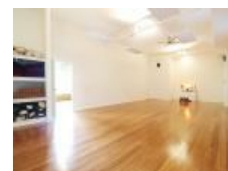


Level 1/407-409 King St, Newtown, NSW 2042

Leased - \$120,000

Retail Shop



Rare 360sqm Offering

LJ Hooker Rockdale is pleased to offer Level 1, 407-409 King Street Newtown.

This versatile space provides a unique offering within a prime retail location situated on the corner of King Street and Holt Street.

- 360sqm* space situated on the first floor of a renovated building
- Private entry from Holt Lane
- Renovated and bright interiors with polished concrete floors, high ceilings and natural light
- Separate male and female amenities
- Two large open rooms with multiple additional store rooms/offices.
- 270 metres to Newtown Train Station

For further details or to arrange an on-site inspection please contact Frank Touma from LJ Hooker Rockdale on 0402 061 276 or 9597 6144.

*approximate area

Open for Inspection

By Appointment.

Listed By

Frank Touma
Phone: (02) 9597 6144
Mobile: 0402 061 276

