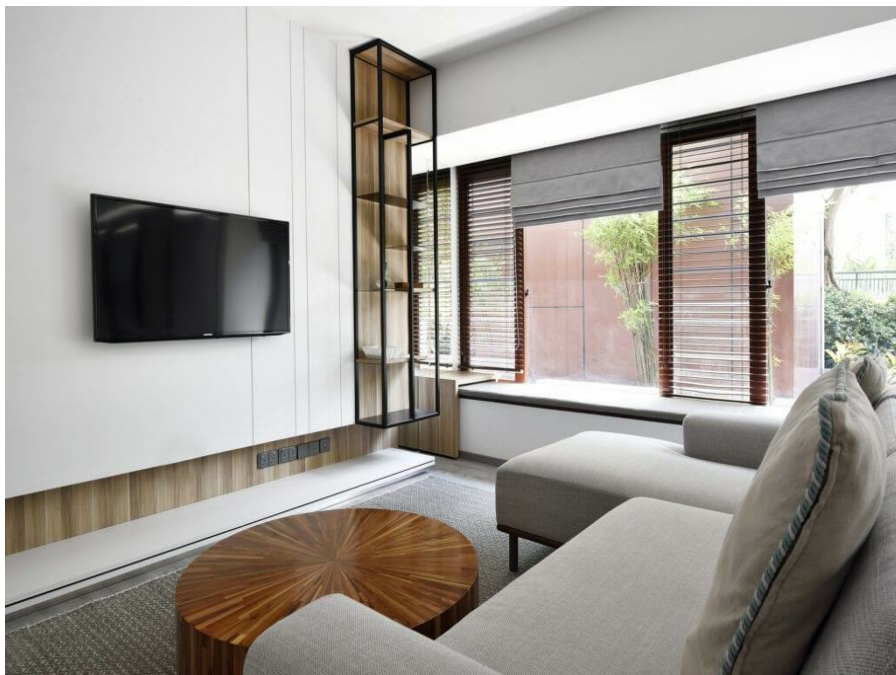


**Loganlea, QLD 4131, address available on request**

**Sold - 25/08/2022**

House 3  2  2 



## Feel the Affordable Convenience and Comfort offered by Logan

This home is clearly designed for convenience and comfort from the moment you walk in the door.

Loganlea is located 28 kilometers from Brisbane's CBD and is close to the Logan Motorway and key infrastructure, including the Logan Hospital, TAFE College, Griffith University Logan, and Loganlea train station, making it an ideal location. In this quiet, established neighborhood, you can enjoy the benefits of living minutes from established schools, shopping centers, medical facilities, and public transportation.

Loganlea State High School, located on Neridah Street, is a government secondary school for boys and girls. It offers a special education program. Waterford West State School is located in neighboring Waterford West to the south, and Kingston State School is located in neighboring Kingston to the north-west.

Loganlea railway station connects to the Queensland Rail City network, which provides regular services to Brisbane, Beenleigh, and the Gold Coast. Loganlea Road and Station Road are two major thoroughfares in the city. The suburb's main connecting roads are Haig Road, Station Road, and Monash Road. Just south of the railway station, a road overpass for the Beenleigh rail line was built. Street parking is limited to two hours in some areas near the railway station.

### Open for Inspection

By Appointment.

### Listed By

Woocheol Kim

Mobile: 0432 118 549

