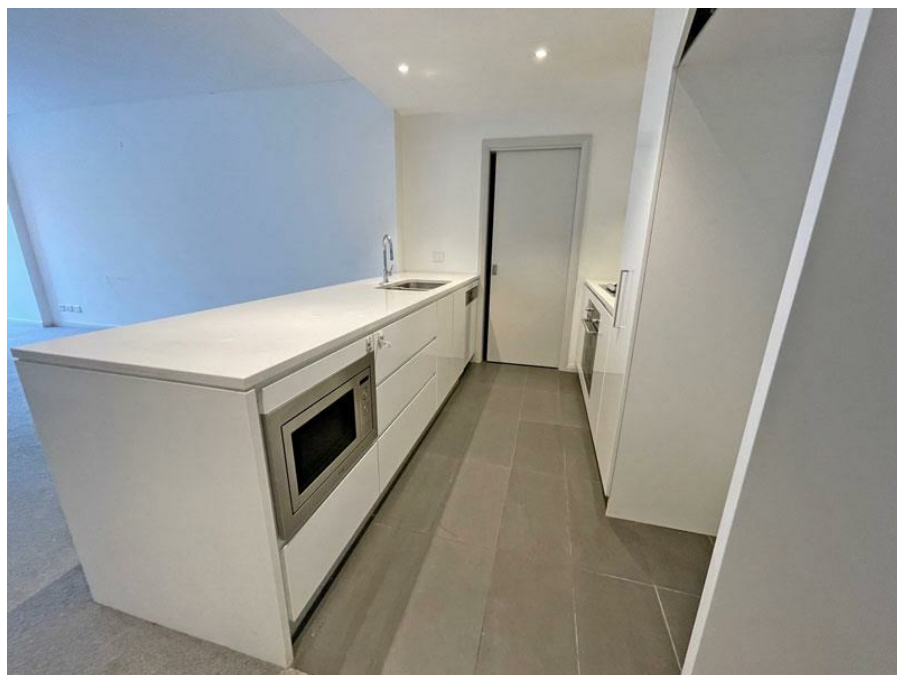


G4.708/1 Park Street North , Wentworth Point, NSW 2127

Leased - \$550

Apartment 2   1 



*** TOP FLOOR UNIT *** LUXURY TWO-BEDROOM APARTMENT IN REGAT

This ground level designer 2 bedroom "Regatta" apartment is located just moments away from the waterfront at Wentworth Point Marinas and only 16km from Sydney CBD. Positioned on the peninsula at Wentworth Point and on the banks of the glistening Parramatta River, this exciting development is adjacent to the luxury boating marina and Homebush Bay Bridge with excellent access to the greater Sydney community via road, rail or ferry.

Open for Inspection

By Appointment.

To pre-register for an inspection or start your application, please see the link below:
<https://app.snug.com/apply/infinitypropertyagents>

Features include:

- Spacious open plan living and dining extends to large outdoor entertainment area
- Modern gas kitchen with stainless appliances and stone benches
- Large bedrooms with built-in wardrobes & air-conditioned throughout
- Laundry includes washer dryer
- Security video intercom system and secure building access
- Internet - NBN ready

About the location:

- Footsteps to Marina Square Shopping Centre (Approx 60m) & Pierside Shopping Centre (Approx 200m)
- Close to Parklands/sporting facilities
- Walking distance to the water, Olympic Park wharf and Rhodes
- Minutes to Strathfield and Ryde & close to the CBD
- Right beside Newington Nature Reserve, Close to Ferry Wharf

~ Quick Facts ~

Lease Period: 6 or 12 months

Pets: Considered upon Application

Availability: 5th October

Parking: 1 x Secure & Private Car Space

Listed By

Michael Kurosawa

Phone: (02) 96999179

Mobile: 0411 641 662

Michael Kurosawa

Phone: (02) 96999179

Mobile: 0411 641 662

