

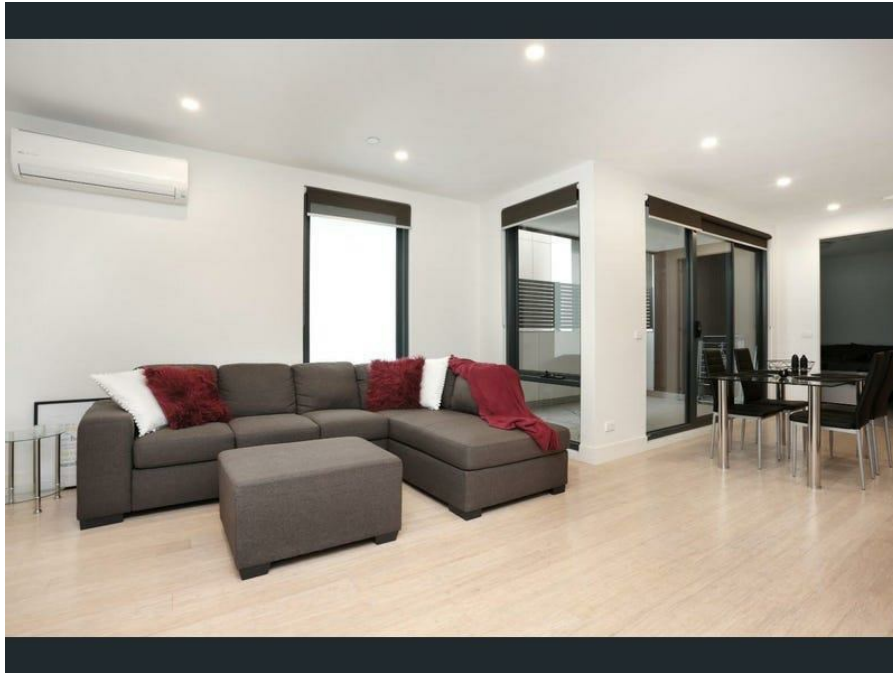



17/15 Moore St, Moonee Ponds, VIC 3039

Leased - \$390

Apartment 1  1  1 

Luxury Living, Great Sized One Bedder!

Located in the highly sought-after activity zone, footsteps away from all the essential amenities, this stunning near new apartment has the finest lifestyle choice combining contemporary luxury. With exquisite finish and great quality list of inclusions, this elegant home will sure to impress anyone.

Open for Inspection

By Appointment.

Comprising of:

A large bedrooms with BIR

Central Bathroom

Open plan kitchen/living/dining areas with a study nook

European laundry

Private balcony

Rooftop terrace with sweeping views of the CBD

Secure undercover car parking

Sized 62.6 m2 approx and only one of 28 apartments

The array of premium extras include double glazed windows, floorboards throughout the apartment, Smeg appliances including dishwasher, Split system cooling/heating, quality blinds, video intercom, secure entrance, and so much more.

Perfectly positioned within 100 meters approx from the train station and Puckle Street shops, approximately 5 stations from the CBD, and close to Queens park. Dont wait until its too late. Contact us today!

Listed By

Leasing Department

