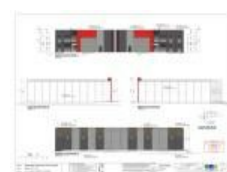
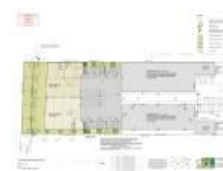


**4/3 Bray St, Hastings, VIC 3915**

**Leased - \$65,200**

Warehouse



## Brand New High and Bright

Only one available of two rear tilt panel factories on secure block of 4.

Currently under construction - shown as Warehouse 4 on plan.

Consists of 652 Sq metres total floor area with 57 sq metre reception/office to front with storage above, separate lunch room, internal W.C. with powder room plus additional invalid W.C. and 15 dedicated concrete car spaces to front on site. Also has 10 metre deep rear yard accessible via electric roller door.

This is the next step for a growing business already established in the Western Port area.

Long Lease with options available.

Contact Exclusive Leasing Agent Chris Watt on 0417 588 321 for details and inspection.

**Open for Inspection**

By Appointment.

Note: Power available is 64 amps per phase but can be upgraded up to 100 amps maximum at tenant cost.

### Listed By

The Office

Phone: (03) 5979 3555

The Office

Phone: (03) 5979 3555

