

10 Meek St, Blayney, NSW 2799

Sold - \$660,000

House 4  2  2 



House

Extremely well-presented and well-loved, in a quiet family-oriented street, this great family home provides privacy and quiet living in the most sought-after Highland Estate development.

This sensational family friendly sanctuary offers something for everyone with plenty of room to spread out and enjoy a relaxed living lifestyle, complimented by easy care landscaping and scenic surrounds

With 4 bedrooms plus the master bedroom with walk-in robe and ensuite, bedrooms 2, 3 & 4 with built-in robes, a family bathroom, along with a separate laundry.

You will find a light filled house, well-appointed and maintained to an exceptional standard. When night descends, the house is well lit due to the strategically placed fixtures, making the house warm and inviting, even at night.

Ample living and dining space, with formal lounge, dining, open plan meals, and family room with adjacent family size kitchen which has stainless trim appliances, dishwasher, a pantry with ample storage. Alfresco is a great space for entertaining.

The home has a double remote garage with internal access, ducted gas heating, and split system air conditioning.

The sensational block is brilliant, with great views over the Blayney district, with rolling hills and serene idyllic pastoral vistas.

The neat and tidy front and the pet friendly rear yard are most impressive, with a garden shed included in the back yard.

Positioned for the maximum convenience, easy access to the local hospital and medical practitioners, this quality family home has ease of access to the local amenities, with cafés, supermarket, pharmacy, Heritage Parks with its tennis courts and sporting grounds in close proximity.

To secure a private inspection contact agent Catherine Whitney on 0497 341 741.

Open for Inspection

By Appointment.

Listed By

Catherine Whitney

Phone: (02) 6368 2010

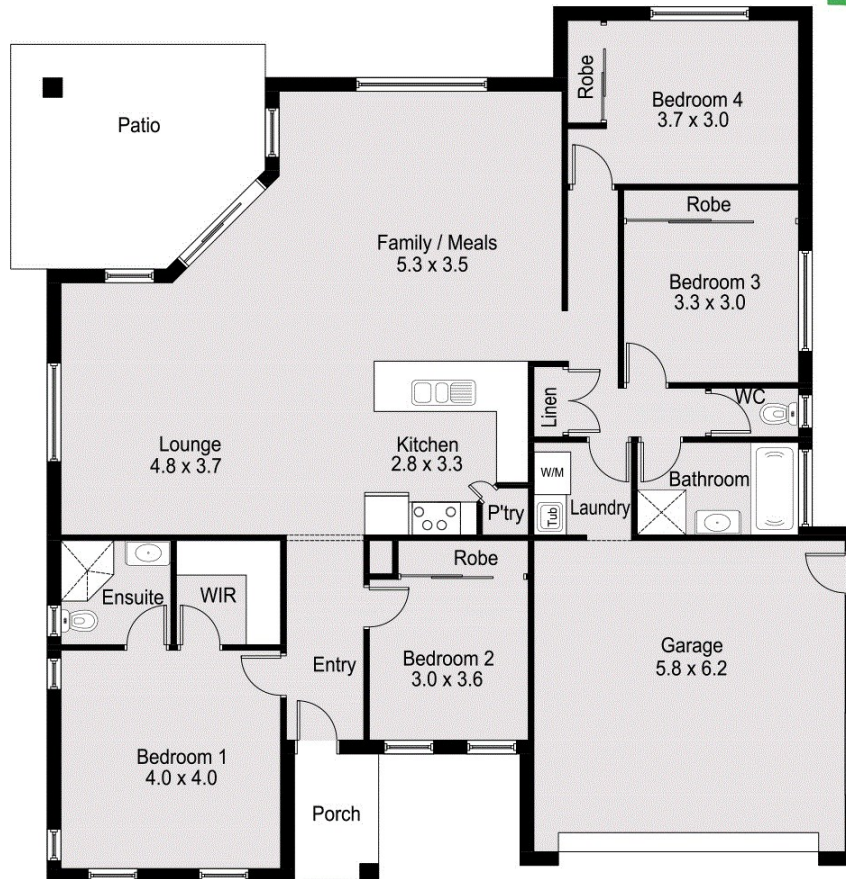
Mobile: 0497 341 741



Floorplan

10 MEEK ST, BLAYNEY FLOORPLAN

PR Masters Stephens & Co
Livestock & Property Agents



Disclaimer: Floor plan dimensions are approximate. Indicative only. All information contained herein is gathered from sources we believe to be reliable, however, are to be used as a guide only. We cannot guarantee its accuracy and interested persons should rely on their own enquiries.